



KERRAH
SIMMENTALS

PROFIT-A-BULL EXCELLENCE



87

**Polled Bulls
for Sale**

bidr

7th On-Farm Bull Auction
Tuesday 24th May 2022 - 1pm

Tangiwai Station
1350 Hereheretau Road, Wairoa



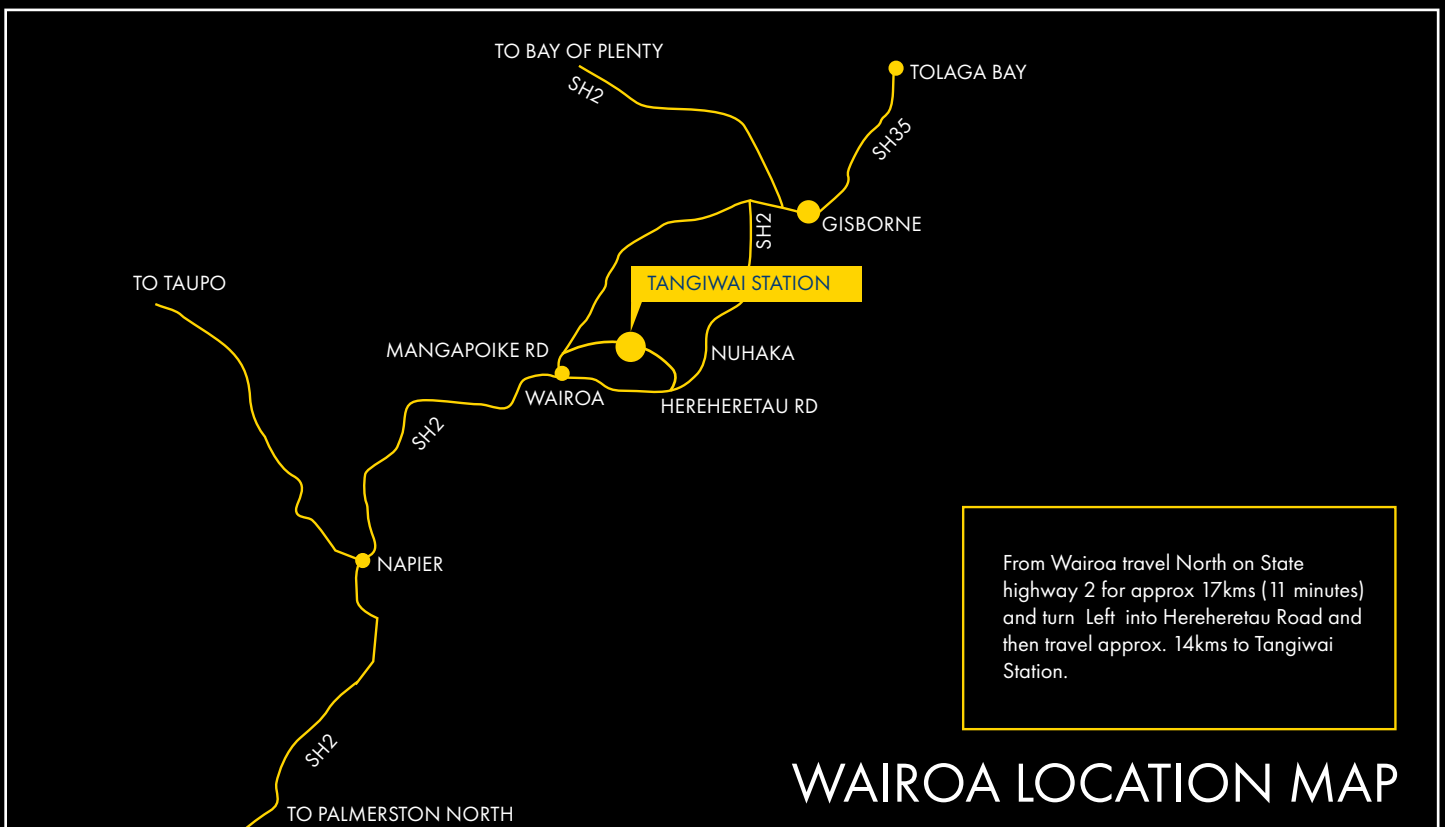
Rising Two Year Bulls for Auction

Tuesday 24th May 2022 - 1pm

at Tangiwai Station, 1350 Hereheretau Road, Wairoa.

(Reasonable cell phone coverage)

All intending purchasers are required to register at the sales office prior to the sale. A purchasing rebate of 6% will then be paid to non-participating livestock companies and recognized independent livestock agents with approved credit facilities introducing and/or accompanying buyers to the sale. Arrangements must be made prior to the sale and settlement made on the purchaser's behalf within 14 days.





KERRAH SIMMENTALS

PROFIT-A-BULL EXCELLENCE

Dear

Well, what an autumn to experience here in Wairoa and on the coast! 950mls for March with another 160 ml two weeks into April. As is the case with farming, there is always adversity at the hands of the climate with many of you experiencing droughts in recent seasons. It's just been our turn with mother nature and our hearts go out to those who were hit harder than us. It is with great pleasure we present approximately 80 quality, sound, polled and performance driven young Simmental Sires on Tuesday May 24th.

This year's bulls have been selected from a drop of 240 calves and farmed in mobs of 40-50 bulls through to 400 days and scanning. Lots 49-62 are born to two-year-old heifers, the balance to MA cows.

We are delighted to be able to bring you another line up of Neogen 100K tested polled bulls for sale - guaranteeing parentage, stipulating bulls homozygous for the polled gene and bulls free from the dilution gene.

Practically, what does this 'homozygous' and 'heterozygous' mean?

- A bull that is homozygous for the polled gene will sire 100% polled calves whatever the cows horn status is.
- A heterozygous polled bull over horned cows will sire 50% polled and 50% horned calves
- A heterozygous polled bull over heterozygous polled cows will sire 25% horned, 50% hetero polled and 25% homozygous polled calves but over pure Angus cows 100% will be polled.
- Scurs is an incomplete development of horns that are detached from the skull and do not need dehorning. The scurred gene is a separate gene (still under investigation) from the polled gene, but will only be displayed in heterozygous polled animals. A scurred bull will throw the same percentage polled animals as a hetero polled animal.

Note – no bulls in the catalogue have had any dehorning – scurs are as they are.

What does the Dilution gene mean?

The dilution gene is a gene that when crossed with a black animal, the progeny's coat colour will be grey/smokey/brown - whatever your preferred description is.

Simmental animals affected by the dilution gene are usually called blondes but a lot of the red Simmentals carry a copy in their background so when crossed, give a mix of red/black/smoky grey calves.

Here at Kerrah, we have been trying to isolate the dilution gene so that bulls such as Lots 34-45 will produce nearly all grey calves over Angus, Friesian/Hereford or dairy cows. They are expressed as A in the catalogue. Bulls marked N are free of the dilution gene and will only produce black or red calves over black cows and will leave more red and white marked straight bred calves. Bulls that are identified as C, carry a copy of the dilution gene so will leave the range of colouring we are used to.

The Neogen test also gives us a tenderness score and a Leptin test but we have not printed the results in the catalogue. We have now been docility scoring for some years. In the most recent sire search, 11 out of the top 15 sires by docility EBV, were bred or used at Kerrah including Fortress, Fine Tuned and Go To with sons in this year's line-up.

We are confident that a purchase of a Kerrah bull will be an investment in the future profitability of your herd and welcome feedback to help us further in the future direction of the stud.

Regards Jon and the Knauf family

Tangiwai Station

SIZE: 2100 HA (1700 ha effective) purchased by Kevin and Colleen Knauf in 1994

TOPOGRAPHY: Tangiwai rises from 700 – 2300 ft a.s.l. It comprises of 1050 ha of steep hill country, 440 ha medium hill and 120 ha of flats predominately at the Iwitea Block on coast.

STOCK TO WINTERED

SHEEP – 5000 ewes 150% lambing 2021, 1700 hoggets RWR and 1000 winter trade lambs.

CATTLE - 520 Sep/Oct calving cows 97% calving 2021, 120 Jan/Feb calving cows and all progeny through 1 winter.

NB ALL REPLACEMENT HEIFERS MATED AS YEARLINGS

Tangiwai's vision is to produce moderate birth weight, easy calving cattle with explosive growth in an early maturing, polled animal that thrives on hill country. We are committed to producing functional, docile cattle using a balance of proven science, (EBVs, Muscle scanning and DNA verification enhanced EBVs in the future) accurate recording and stockmanship, bred in a challenging Wairoa hill country environment, to deliver profit-a-bull genetics that will last for our clients.

This year has seen another outstanding line of 135 VIC R2 heifers retained whose EBVs are comparable to their brothers in the sale. These heifers had the opportunity of the bull for only 35 days. Last year's calving of the heifers was the smoothest we have ever had with bulls like Crumpy and Efficient giving us calving ease not seen in the breed before, backed up by the results from the Beef and Lamb Dairy Beef Progeny test showing they have birthweight and gestation to match the best of any breed. The cows saw a great line up of homozygous bulls headed by Kerrah Epic who has bred so well, Kerrah Go To and yearling 565, an all-round standout. Waikite 2073, our purchase from last year, and Kerrah J454 were the only Heterozygous bulls used - both extreme growth bulls. Other sires used were J617, J475, J470, 525, J306, 190301 and Kerrah Grunta.

The cows saw a great line up of homozygous bulls, headed by Kerrah Go To, an outstanding young sire with performance, phenotype, libido and outstanding docility with his 18 heifer calves and 7 bulls from his yearling mating real standouts in the weaners. Kerrah Epic, Fortress, Foreman, Goldcoast, Genesis, Grunta, and ylg 190301 and 190290 making up the a team all homozygous polled. Kerrah Fine Tuned was the only frontline hetero polled bull used. Glenside Frontier, Lonepine G71 and Kerrah Galaxy backing up AI and recipients.

Those clients keeping the daughters from Kerrah bulls should have confidence that they will perform with the best under most conditions. Science has shown that you can expect an 8.5% gain from heterosis in a two way cross and 23% gain in a three way cross for calf weaned per cow mated. Combine this with Simmentals' ability to add milk and growth, and you have a very profitable combination.

Genetic Progress. It is heartening to see that after the initial major investment in cows from all over the country and evaluating them under the rugged conditions at Tangiwai Station, the progress is accelerating. Once again the in calf rate has improved steadily and we now have the **calving interval down to 46 days for cows and 36 days for heifers**. Kerrah's herd and sale team's average EBVs rank well above breed average for all traits except birth weight. It is great to see Simmental excelling in the Beef and Lamb Progeny Test. Structural soundness and docility has been, and will continue to be, a focus of the Kerrah herd.

PERFORMANCE RECORDS

At Tangiwai, along with the usual structural assessments etc, there is a great belief that to make genetic progress, performance recording is paramount. A large amount of time is invested in this to maximize the accuracy of raw data input. If you put rubbish in you get rubbish out. Put good, accurate data in and achieve the greatest genetic gain – a maxim the stud believes in. Combine this with the large size of management groups and you have meaningful data to work with. On average, the generated breeding values from Kerrah have a 10% higher accuracy than other Simmental 20 month sale bulls.

This year we have included the Docility EBV as well as the docility score. I think the score gives a quick categorised overview taking into account the EBV and the bulls actual temperament.

A bull with 1 or 1.5 is seen as a docility improver, of which there are plenty this year, a 2 satisfactory and 2.5 on the lower end of what we offer.

A big thankyou to all our staff, Shayne Walker, Hughie Stephens, Turei White and my family – wife Sam, Children- Josh and Nickayla, Lauren, Tessa and Ben and my mum Colleen for their continued support. Thanks again to Alastair Milne for his continued support and input.

Also thanks to Ross and Phil who also do their best to ensure your bulls' transport to their new home is as cost effective and smooth as possible, wherever in the country you may be.

The Kerrah team wish you well with your new purchases. Please remember that we welcome your feedback, both positive and negative. It is very important to us to know how the bulls are performing to help refine the future breeding program.

Kerrah Simmental Sale

RECOMMENDATIONS

We appreciate that it is not always easy to turn up on sale day and make the all important decision of which bull to buy. To help with this we have coded our recommendations for what breeding policy we believe each bull is best suited for. This is based on not only the bulls own records but how his family has performed in the herd.

CODES

H1 – this means the bull is suitable for mating well grown beef yearling heifers. It is based on the bulls EBV's for birth weight and calving ease combined with the knowledge on the performance of the sire and the dam.

H2 – means the bull can be used with confidence for mating two year old heifers or second calvers and dairy cows.

M – This bull we consider most suitable for retention of his daughters, based not only on the EBV's for birth, calving ease, scrotal circumference and milk but also on scanning data and the ability of the mother and her family to get back into calf each year. Also takes into account any twinning history (ie bulls with a twinning background are considered Terminal only) and udder conformation.

T – These sires are most suitable for producing top weaners which have the ability to grow on and be ready for slaughter at 20 months of age.

Note – A bull can have more than one code. Also note that breed indexes are another easy system to use if you are not worried about emphasis on a single trait. (see under EBV's explained for more information on these – page 4).

DILUTION GENE CODES

A – Carries the Dilution gene.

N – Carries no Dilution gene.

C – Carries one copy of the Dilution gene.

See letter for explanation.

Guarantees

All Kerrah bulls are guaranteed for 2 years from date of sale against structural unsoundness.

Under these circumstances Kerrah will:

- Replace the bull with a satisfactory substitute if available, or:
- Issue a credit equal to the purchase price less the salvage value. This credit may be used at future Kerrah bull sales.

The guarantee covers the purchase value of the bull without interest, cost or damages. The guarantee shall apply providing the bull's incapacity is not caused by injury or disease contracted since leaving Tangiwai and is calculated on the basis that the guarantee is reduced by one half of the purchase price for each year of standard service from the sale date. A veterinary certificate must be supplied by the purchaser upon request.

All auction bulls have been palpated, scrotal measured, semen and service tested by Farm Vets Wairoa within 6 weeks of sale day. We therefore consider the bulls sold as fertile with libido. Any issues arising with fertility that are not structural will be considered an environmental issue or infection post sale.

We recommend that all purchasers discuss injury insurance of their bulls at the sale.

HEALTH

The Kerrah herd is assessed annually for general health, udder, feet and temperament defects, all animals not meeting a high standard are culled.

All Auction bulls have been palpated, scrotal measured and Semen and Service tested on the 13/4/2022 or subsequently before auction by Farm Vets Wairoa. They have been given a 10n1 and BVD booster. All bulls have been DNA tested negative for BVD. Kerrah is a Brucellosis free and TB accredited herd and carries a C10 status.

ON OFFER

ADVISORY SERVICE

We welcome the opportunity to become involved in your breeding program, to give another opinion, to bounce ideas off and get feed back from the breeding program.

TRANSPORT

We offer free transport to the value of \$200 or transport to one of the following destinations - Hamilton, TeKuiti, Feilding, or Wanganui. Please fill in the transporters section in the purchaser's slip as being in touch with the transport firm you deal with most often can both reduce the time in transit and ease the cost of getting your bull home.

BACK-UP SERVICE

If you have problems during mating or through the year we will endeavour to help by supplying a back up bull, with the option of purchasing him if satisfied. With the help of our agents and knowing what transport firm you use, delivery can usually be swift.



BIDR CONDITIONS

This sale will be hosted by bidr® (www.bidr.co.nz) as a HYBRID auction, with online bidding and a live-stream available on sale day, as well as the normal on-farm format. All intending ONLINE purchasers must register on bidr® in advance of the sale date, by visiting the website and using the "sign up" button, adding their contact information and nominating the agency they would like to purchase through and account held with that agency. Alternatively, purchasers can organise an agent from one of the agencies listed on bidr® to buy on their behalf. The bidr® team is always available to help purchasers get signed up and registered, and the HelpDesk is proudly managed in-house from the Waikato. Please call 0800 TO BIDR (0800 86 2437), or email enquiries@bidr.co.nz for assistance at any point. Alternatively, contact your local bidr® representative:

National Sales and Operations Manager: Caitlin Rokela (027 405 6156)
Upper NI: Jess Davies (027 367 2837)
Lower NI: Aimee Flynn (027 282 1710)
Upper SI: Bianca Murch (027 732 0006)
Lower SI: Sam Murphy (027 243 2736)

EBV's Explained

ESTIMATED BREEDING VALUES (EBV'S)

An EBV is the best estimate of an animal's genetic merit for that trait.

CALVING EASE: Calving ease are based on calving ease scores, birth weights and gestation length information. More positive EBV's indicate easier calving.

DIR: Direct Calving Ease indicated how this animal influences the birth of it's progeny.

BWT: Birth Weight EBV (kg) is based on the measured birth weight of animals, adjusted for dam age. The lower the value the lighter the calf at birth and the lower the likelihood of a difficult birth. This is particularly important when selecting sires for use over heifers.

200: 200 Day Growth EBV (kg) is calculated from the weight of animals taken between 80 and 300 days of age. Values are adjusted to 200 days and for dam age. This EBV is the best single estimate of an animal's genetic merit for growth to weaning.

400: 400 Day Weight EBV (kg) is calculated from the weight of progeny taken between 301 and 500 days of age, adjusted to 400 days and for dam age. This EBV is the best single estimate of an animal's genetic merit for yearling weight.

600: 600-Day Weight EBV (kg) is calculated from the weight of progeny taken between 501 and 900 days of age, adjusted to 600 days and dam age. This EBV is the best single estimate of an animal's genetic merit for growth beyond yearling age.

Scrotal Size EBV (cm) is calculated from the circumference of the scrotum taken between 300 and 700 days of age and adjusted to 400 days of age. This EBV is an estimate of an animal's genetic merit for scrotal size. There is also a small negative correlation with age of puberty in female progeny and therefore selection for increased scrotal size will result in reduced age at calving of female progeny.

MILK: 200-Day Milk EBV (kg) is an estimate of an animal's milking ability. For sires, this EBV is indicative of their daughter's milking ability as it affects the 200 day weight of their calves.

CWT: Carcase Weight EBV (kg) estimates the genetic difference in carcase weight at a standard age of 650 days. More positive EBVs indicate heavier carcasses at 650 days of age.

EMA: Eye Muscle Area (cm²) estimates genetic difference in eye muscle area at the 12/13th rib state of a 300kg dressed carcass. More positive EBVs indicate better muscling on animals.

RIB FAT: Rib Fat EBV (mm) estimates the genetic differences in fat depth at the 12/13th rib in a 300 kg dressed carcass. More positive EBVs indicate more subcutaneous fat and earlier maturity.

P8 FAT: Rump Fat EBV (mm) estimates the genetic differences in fat depth at the P8 site of a 300kg dressed carcass. More positive EBVs indicate more subcutaneous fat and earlier maturity.

Retail Beef Yield EBV (%) indicates genetic differences between animals for retail yield percentage in a standard 400 kg carcass. Sires with larger EBVs are expected to produce progeny with higher yielding carcasses.

ACTUAL MEASUREMENT:

SS: Yearling Scrotal: Scrotal Circumference is an indicator of male fertility as expressed in semen quality and quantity. The larger the circumference indicates higher fertility. Scrotal Circumference is also highly correlated with early puberty in their daughters. This is why we measure bulls as yearlings for their EBVs as this is when we want our female to reach puberty. We also measure them again prior to sale, the reason, the bigger they are the more "marbles" in the pouch, potentially the more cows he can serve. The measurement in the catalogue was taken at 18 months.

ACE: Accuracy (%) is based on the amount of performance information available on the animal and its close relatives - potentially the number of progeny analysed. It indicates the "confidence level" of the EBV. This is why at Tangiwai both female and male data are analysed. 560 animals to the weaning stage (200 days), 500 to the yearling stage (400 days) and scanning.

UNDERSTANDING THE INDEXES:

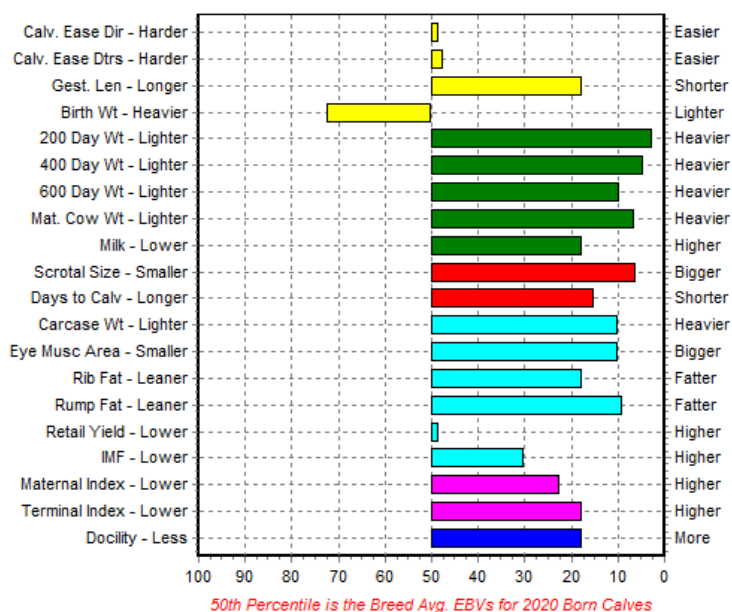
Index values are provided for each bull. These allow the expected profitability of the progeny of different bulls to be compared.

The Maternal Index compares sires on the basis that a proportion of their female progeny will be retained in the herd as breeding replacements. The Terminal Index compares sires on the basis that all progeny will be finished for slaughter (no females retained for breeding).

Also to note, is that indexes are a good tool but their limitation is key traits have a big influence on the index value and operate on the premise more is always better rather than a threshold. At Kerrah we aim to breed balanced cattle trying to avoid extremes of traits as most often there is an antagonistic trait or traits associated with a favourable trait. All said and done, we are still trying to breed a Polled, phenotypically pleasing, docile bull in the top 20% for every trait and index.

Lot 6 Kerrah J477

EBV Percentiles for KERRAH J477



2022 SIMMENTAL AVERAGES BREEDPLAN EBVs FOR 2020 BORN CALVES

CE Direct	BW	200D	400D	600D	Milk	SS	CARCASE	EMA	RIB	RUMP	IMF	Docility
+2.6	+0.6	+20	+37	+46	+8	+0.5	+25	+2.4	+0.5	+0.2	+0.3	+9

BREED INDEXES (\$)

Maternal	+\$86	Terminal	+45
----------	--------------	----------	------------

TOP 10% FOR THE BREED HIGHLIGHTED IN BLUE

TOP 30% FOR THE BREED HIGHLIGHTED IN YELLOW

April 2022 SIMMENTAL PERCENTILE BANDS FOR 2020 BORN CALVES

Use this table as a guide to compare individual animals with the current genetic level of the breed

	Calv-Ease		Birth		Growth					Fert		Carcase						Indexes		Extra
	Dir	Dtrs	GL	Bwt	200	400	600	Mwt	Milk	SS	DC	Cwt	EMA	Rib	P8	RBY	IMF	MA	TE	Doc
	%		days		kg					cm	days	kg	sq.cm	mm		%		\$		%
High 1%	+13.3	+10.8	-6.6	-4.3	+35	+67	+86	+94	+16	+2.0	-5.5	+50	+5.5	+4.3	+3.8	+2.3	+2.0	+132	+67	+39
High 5%	+10.5	+8.3	-4.8	-3.0	+31	+58	+76	+81	+14	+1.6	-4.1	+43	+4.3	+2.9	+2.5	+1.9	+1.3	+124	+61	+31
High 10%	+9.0	+7.0	-3.9	-2.2	+29	+54	+70	+74	+13	+1.3	-3.3	+39	+3.8	+2.0	+1.6	+1.6	+1.0	+117	+58	+27
High 15%	+7.8	+6.2	-3.4	-1.6	+27	+50	+66	+69	+12	+1.2	-2.9	+36	+3.6	+1.6	+1.2	+1.5	+0.8	+113	+56	+23
High 20%	+6.9	+5.5	-3.0	-1.1	+26	+48	+62	+65	+12	+1.1	-2.7	+34	+3.4	+1.3	+1.0	+1.4	+0.6	+108	+54	+21
High 25%	+6.1	+4.8	-2.7	-0.7	+25	+45	+59	+61	+11	+0.9	-2.5	+32	+3.2	+1.1	+0.8	+1.2	+0.5	+105	+53	+19
High 30%	+5.4	+4.2	-2.4	-0.3	+24	+43	+55	+57	+11	+0.8	-2.3	+30	+3.0	+0.9	+0.6	+1.1	+0.4	+102	+51	+17
High 35%	+4.6	+3.6	-2.1	+0.0	+23	+41	+52	+54	+10	+0.8	-2.1	+29	+2.9	+0.7	+0.5	+1.0	+0.3	+98	+50	+15
High 40%	+4.0	+3.1	-1.9	+0.4	+22	+40	+49	+51	+10	+0.7	-1.9	+27	+2.7	+0.5	+0.4	+0.9	+0.3	+95	+49	+13
High 45%	+3.4	+2.5	-1.7	+0.6	+21	+38	+47	+48	+9	+0.6	-1.7	+26	+2.6	+0.4	+0.2	+0.8	+0.2	+91	+47	+11
50%	+2.8	+1.9	-1.5	+0.9	+20	+36	+45	+45	+9	+0.5	-1.5	+24	+2.4	+0.3	+0.1	+0.7	+0.2	+88	+46	+10
Low 45%	+2.1	+1.4	-1.2	+1.1	+20	+35	+43	+43	+8	+0.4	-1.3	+23	+2.3	+0.1	+0.0	+0.5	+0.1	+85	+44	+8
Low 40%	+1.5	+0.9	-1.0	+1.3	+19	+33	+41	+41	+7	+0.4	-1.1	+22	+2.2	+0.0	-0.1	+0.4	+0.1	+80	+42	+6
Low 35%	+0.9	+0.3	-0.8	+1.5	+18	+32	+38	+38	+7	+0.3	-0.9	+21	+2.1	-0.1	-0.3	+0.2	+0.0	+77	+41	+4
Low 30%	+0.1	-0.4	-0.6	+1.7	+17	+30	+36	+36	+6	+0.2	-0.7	+19	+1.9	-0.2	-0.4	+0.0	+0.0	+73	+39	+2
Low 25%	-0.5	-1.1	-0.4	+2.0	+16	+28	+34	+33	+5	+0.1	-0.5	+18	+1.8	-0.3	-0.5	-0.2	+0.0	+68	+38	+0
Low 20%	-1.3	-1.8	-0.2	+2.2	+15	+26	+31	+30	+4	+0.0	-0.3	+17	+1.6	-0.5	-0.6	-0.5	-0.1	+63	+35	-2
Low 15%	-2.3	-2.7	+0.1	+2.4	+14	+24	+28	+26	+4	-0.1	+0.0	+15	+1.4	-0.6	-0.8	-0.8	-0.1	+57	+33	-5
Low 10%	-3.6	-3.9	+0.4	+2.8	+12	+21	+25	+22	+3	-0.4	+0.2	+13	+1.1	-0.7	-1.0	-1.2	-0.2	+50	+31	-9

BNZ Partners are proud to support the Kerrah Simmentals Bull Sale.

Got any banking questions? Ask us today.

› Hamish Campbell, Senior Partner › 029 536 0310 › hamish_d_campbell@bnz.co.nz
› Leslie Bolton, Agribusiness Partner › 029 222 0413 › leslie_bolton@bnz.co.nz



Autumn born bulls on the move



REFERENCE SIREs

KERRAH FIRST CHOICE F360

RISSINGTON NEW STANDARD AU158

S: GLENSIDE CRUMPY C4

GLENSIDE AW820

TOKAWEKA HANDSOME AH801

D: KERRAH AX9060

RISSINGTON AM760

Reg No.: 1667AF0360

Born: 26/09/17

COMMENTS:

Has really bred well used 3 sons this year shame he injured himself in a fence at the start of second season.

2022 AUSTRALASIAN GROUP BREEDPLAN EBVs													INDEXES	
CE Direct	BW	200D	400D	600D	Milk	SS	CARCASE	EMA	RIB	RUMP	IMF	Docility	Maternal	Terminal
+11.4	+0.4	+30	+64	+79	+12	+0.9	+49	+4.7	+0.1	-0.1	+0.1	+9	+\$131	+\$74
66%	92%	90%	90%	85%	59%	90%	77%	72%	79%	78%	69%	90%		

Traits observed: CE BWT 200WT 400WT SS FAT EMA IMF DOC

KERRAH GO TO G724

KERRAH WITHOUT DOUBT AW68

S: KERRAH BEYOND DOUBT B389

KERRAH AY9

RISSINGTON AFTER SHOCK AA1020

D: KERRAH C224

KERRAH CY26

Reg No.: 1667180724

Born: 22/09/18

COMMENTS:

Just the best bull to handle, left heaps of growth with softness and great docility.

2022 AUSTRALASIAN GROUP BREEDPLAN EBVs													INDEXES	
CE Direct	BW	200D	400D	600D	Milk	SS	CARCASE	EMA	RIB	RUMP	IMF	Docility	Maternal	Terminal
+0.7	+3.2	+34	+68	+85	+7	+1.0	+49	+5.2	+0.4	+0.4	-0.1	+36	+\$109	+\$65
62%	92%	87%	88%	78%	51%	85%	71%	66%	74%	73%	65%	86%		

Traits observed: CE BWT 200WT 400WT SS FAT EMA IMF DOC

KERRAH FUNDAMENTAL F509

RISSINGTON NEW STANDARD AU158

S: GLENSIDE CRUMPY C4

GLENSIDE AW820

GLENSIDE XECUTIVE AX14

D: KERRAH A9

KERRAH AY9

Reg No.: 1667AF0509

Born: 16/09/17

COMMENTS:

A very good structured bull with balanced performance.

2022 AUSTRALASIAN GROUP BREEDPLAN EBVs													INDEXES	
CE Direct	BW	200D	400D	600D	Milk	SS	CARCASE	EMA	RIB	RUMP	IMF	Docility	Maternal	Terminal
+5.2	+0.4	+26	+51	+55	+9	+1.1	+32	+3.8	+1.5	+1.8	+0.3	-4	+\$111	+\$52
60%	86%	81%	83%	76%	56%	80%	69%	63%	72%	71%	63%	78%		

Traits observed: CE BWT 200WT 400WT SS FAT EMA IMF DOC

2022 AUSTRALASIAN GROUP BREEDPLAN AVERAGE EBVs													INDEXES	
CE Direct	BW	200D	400D	600D	Milk	SS	CARCASE	EMA	RIB	RUMP	IMF	Docility	Maternal	Terminal
+2.6	+0.6	+20	+37	+46	+8	+0.5	+25	+2.4	+0.5	+0.2	+0.3	+9	+\$86	+\$45

REFERENCE SIREs

KERRAH FAT CAT F576

MARCHANT IMPECABLE AJ923

S: KERRAH CAPTAIN C400

KERRAH Z219

KERRAH WHY WONDER AW101

D: KERRAH B176

KERRAH Z176

Reg No.: 1667AF0576

Born: 23/10/17

COMMENTS:

A bull with exceptional muscle left some nice progeny

2022 AUSTRALASIAN GROUP BREEDPLAN EBVs													INDEXES	
CE Direct	BW	200D	400D	600D	Milk	SS	CARCASE	EMA	RIB	RUMP	IMF	Docility	Maternal	Terminal
+6.3	+1.2	+22	+52	+66	+11	+0.0	+39	+3.3	+0.4	+0.6	-0.5	-2	+\$116	+\$56
56%	85%	79%	80%	74%	53%	77%	66%	60%	69%	68%	60%	75%		

Traits observed: CE BWT 200WT 400WT SS FAT EMA IMF DOC

KERRAH FINE TUNED F385

TE RAUMAUKU 1501/AU25

S: TE RAUMAUKU ANACONDA A13

TE RAUMAUKU AW73

KERRAH WOW FACTOR AW60

D: KERRAH C100

KERRAH Z100

Reg No.: 1667AF0385

Born: 23/10/17

COMMENTS:

A very sound and docile bull with good performance.

2022 AUSTRALASIAN GROUP BREEDPLAN EBVs													INDEXES	
CE Direct	BW	200D	400D	600D	Milk	SS	CARCASE	EMA	RIB	RUMP	IMF	Docility	Maternal	Terminal
+4.2	+2.5	+32	+61	+75	+12	+1.5	+42	+3.2	+0.1	+0.0	-0.3	+31	+\$111	+\$60
62%	93%	87%	88%	84%	53%	86%	74%	67%	76%	75%	66%	86%		

Traits observed: CE BWT 200WT 400WT SS FAT EMA IMF DOC

GLENSIDE FRONTIER F19

GLEN ANTHONY Y-ARTA AY02 (ET)

S: RUAVIEW PINETREE AC6

RUAVIEW POLLY AW12

RISSINGTON NEW STANDARD AU158

D: GLENSIDE A207

WILLOWBROOK ULA AU20 (ET)

Reg No.: 1312AF0019

Born: 21/09/17

COMMENTS:

Used on Beef + LambNZ progeny test and ranked first for weaning weight for his cohort across all bulls and breeds in the trial.

2022 AUSTRALASIAN GROUP BREEDPLAN EBVs													INDEXES	
CE Direct	BW	200D	400D	600D	Milk	SS	CARCASE	EMA	RIB	RUMP	IMF	Docility	Maternal	Terminal
+5.9	+0.9	+28	+55	+70	+13	+1.3	+39	+2.8	+1.8	+2.5	+0.7	+10	+\$102	+\$54
62%	91%	87%	87%	79%	55%	82%	72%	64%	74%	73%	66%	86%		

Traits observed: CE BWT 200WT 400WT 600WT SS FAT EMA IMF DOC

2022 AUSTRALASIAN GROUP BREEDPLAN AVERAGE EBVs													INDEXES	
CE Direct	BW	200D	400D	600D	Milk	SS	CARCASE	EMA	RIB	RUMP	IMF	Docility	Maternal	Terminal
+2.6	+0.6	+20	+37	+46	+8	+0.5	+25	+2.4	+0.5	+0.2	+0.3	+9	+\$86	+\$45

REFERENCE SIREs

KERRAH FOREMAN F349

GLENSIDE XECUTIVE AX14

S: KERRAH ALLROUNDER A518

KERRAH AY18

TE RAUMAUKU NO WORRIES AN8

D: KERRAH AW8049

RISSINGTON AM249

Reg No.: 1667AF0349

Born: 24/09/17

COMMENTS:

A bull with exceptional fats yet with a big frame. Unfortunately not a lot of progeny but what there are very good.

2022 AUSTRALASIAN GROUP BREEDPLAN EBVs													INDEXES	
CE Direct	BW	200D	400D	600D	Milk	SS	CARCASE	EMA	RIB	RUMP	IMF	Docility	Maternal	Terminal
-0.1	+2.9	+30	+54	+69	+10	+0.8	+35	+3.6	+2.0	+2.5	-0.2	+20	+\$82	+\$47
60%	86%	81%	81%	75%	58%	82%	68%	63%	67%	67%	55%	79%		

Traits observed: CE BWT 200WT 400WT SS FAT EMA IMF DOC

KERRAH G746

IDESIA BANDANA

S: KERRAH EMPEROR E440

KERRAH B140

WAIKITE ZACKARIAS AZ0176

D: KERRAH D246

KERRAH B40

Reg No.: 1667180746

Born: 15/09/18

COMMENTS:

A bull used for his all round balance.

2022 AUSTRALASIAN GROUP BREEDPLAN EBVs													INDEXES	
CE Direct	BW	200D	400D	600D	Milk	SS	CARCASE	EMA	RIB	RUMP	IMF	Docility	Maternal	Terminal
+7.9	+1.0	+20	+51	+61	+8	+0.9	+35	+2.4	+1.0	+1.2	-0.1	+31	+\$126	+\$53
55%	86%	80%	82%	74%	46%	82%	66%	62%	68%	66%	58%	75%		

Traits observed: CE BWT 200WT 400WT SS FAT EMA IMF DOC

KERRAH GUTSY G716

TE RAUMAUKU A15

S: TE RAUMAUKU DEEP GUTS D25

TE RAUMAUKU AZ31

KERRAH WITHOUT DOUBT AW68

D: KERRAH A216

KERRAH CT6116

Reg No.: 1667180716

Born: 16/09/18

COMMENTS:

Exceptional yearling but has bred inconsistently.

2022 AUSTRALASIAN GROUP BREEDPLAN EBVs													INDEXES	
CE Direct	BW	200D	400D	600D	Milk	SS	CARCASE	EMA	RIB	RUMP	IMF	Docility	Maternal	Terminal
-2.1	+2.8	+28	+62	+88	+12	+2.5	+46	+3.9	-0.6	-0.9	+0.1	-2	+\$83	+\$54
58%	88%	82%	82%	75%	50%	80%	67%	60%	69%	67%	59%	79%		

Traits observed: CE BWT 200WT 400WT SS FAT EMA IMF DOC

2022 AUSTRALASIAN GROUP BREEDPLAN AVERAGE EBVs													INDEXES	
CE Direct	BW	200D	400D	600D	Milk	SS	CARCASE	EMA	RIB	RUMP	IMF	Docility	Maternal	Terminal
+2.6	+0.6	+20	+37	+46	+8	+0.5	+25	+2.4	+0.5	+0.2	+0.3	+9	+\$86	+\$45

bidr[®] is here.

Trade Livestock Like Never Before

Buy and Sell livestock on bidr[®] in 3 easy steps:

1

Sign up at
www.bidr.co.nz
and add your
agency account
under account
details

2

Browse auctions to
find livestock you
are interested in
buying

3

Login and register
for the real time
online auction to
bid for the livestock
you wish to
purchase



Real time
auctions, bid
on livestock
from
anywhere.



All livestock
listed by
livestock
agents and
assessed by
accredited
assessors.



Nationwide
Reach.
Bringing
more buyers
and sellers
together,
Virtually.



Buy livestock
straight from
farm resulting
in less stress
on animals
and positive
environmental
benefits.



Full livestock
assessment
information
for buyers and
nationwide
reach for
sellers.

bidr[®]

Contact your bidr[®] Representative
to sign up at bidr.co.nz

0800 TO BIDR



fb.com/bidrnz
instagram.com/bidrnz

NZ's VIRTUAL SALEYARD | www.bidr.co.nz | 0800 TO BIDR

We've merged top creative design talent with digital marketing expertise.



Our skilled and creative team will move your business forward in leaps and bounds! For successful online business growth with proven ongoing results, talk to us today.



WEBSITE
DESIGN



SOCIAL MEDIA



EMAIL
MARKETING



SEARCH



PAID MEDIA



GOOGLE 360

piv • t
DESIGN

75 South Street, Feilding

06 323 0740

info@pivotdesign.co.nz

[pivotdesignnz](https://www.pivotdesign.co.nz)

www.pivotdesign.co.nz

REFERENCE SIRES

KERRAH FLAMBOYANT F403

WAIKITE U BIG FELLOW AU064

S: KERRAH BIG BOY B449

KERRAH AW8149

KERRAH WITHOUT DOUBT AW68

D: KERRAH Z3

KERRAH AT6003

Reg No.: 1667AF0403

Born: 12/09/17

COMMENTS:

Terminal sire with impact, huge growth and capacity.

2022 AUSTRALASIAN GROUP BREEDPLAN EBVs													INDEXES	
CE Direct	BW	200D	400D	600D	Milk	SS	CARCASE	EMA	RIB	RUMP	IMF	Docility	Maternal	Terminal
-0.2	+3.7	+32	+70	+88	+4	+1.9	+56	+5.7	-0.7	-1.2	-0.5	+0	+\$114	+\$67
64%	93%	90%	91%	88%	57%	88%	77%	70%	79%	78%	70%	91%		

Traits observed: CE BWT 200WT 400WT SS FAT EMA IMF DOC

KERRAH G891

RISSINGTON NEW STANDARD AU158

S: WAIKITE AC2069

WAIKITE AY0004

KERRAH XFACTOR AX187 (ET)

D: KERRAH D191

KERRAH B191

Reg No.: 1667180891

Born: 29/09/18

COMMENTS:

Used as yearling has left a lot of growth and frame.

2022 AUSTRALASIAN GROUP BREEDPLAN EBVs													INDEXES	
CE Direct	BW	200D	400D	600D	Milk	SS	CARCASE	EMA	RIB	RUMP	IMF	Docility	Maternal	Terminal
+5.4	+1.3	+29	+64	+79	+13	+0.9	+51	+3.5	-0.7	-1.3	+0.1	+34	+\$116	+\$63
56%	84%	80%	81%	75%	53%	80%	67%	62%	68%	67%	60%	77%		

Traits observed: CE BWT 200WT 400WT SS FAT EMA IMF DOC

KERRAH FORTRESS F326

GLENSIDE XECUTIVE AX14

S: KERRAH ALLROUNDER A518

KERRAH AY18

KERRAH XCITING AX57

D: KERRAH A67

KERRAH AW8067

Reg No.: 1667AF0326

Born: 26/09/17

COMMENTS:

Leaves a great type and good docility been a good sire at Kerrah.

2022 AUSTRALASIAN GROUP BREEDPLAN EBVs													INDEXES	
CE Direct	BW	200D	400D	600D	Milk	SS	CARCASE	EMA	RIB	RUMP	IMF	Docility	Maternal	Terminal
+10.9	+0.2	+24	+47	+67	+11	+0.9	+40	+3.4	+0.8	+0.6	-0.4	+41	+\$116	+\$56
65%	93%	91%	92%	88%	56%	91%	77%	71%	80%	78%	69%	92%		

Traits observed: CE BWT 200WT 400WT SS FAT EMA IMF DOC

2022 AUSTRALASIAN GROUP BREEDPLAN AVERAGE EBVs													INDEXES	
CE Direct	BW	200D	400D	600D	Milk	SS	CARCASE	EMA	RIB	RUMP	IMF	Docility	Maternal	Terminal
+2.6	+0.6	+20	+37	+46	+8	+0.5	+25	+2.4	+0.5	+0.2	+0.3	+9	+\$86	+\$45

GLENSIDE CRUMPY C4

PUKETAWA NEW LEVEL AN151

S: RISSINGTON NEW STANDARD AU158

RISSINGTON AN398

GLENSIDE RICOCHET AR5

D: GLENSIDE AW820

GLENSIDE AT617

Reg No.: 1312AC0004

Born: 05/09/14

COMMENTS:

Proven calving ease sire, daughters moderate easy keeping with great udders and fertility

2022 AUSTRALASIAN GROUP BREEDPLAN EBVs													INDEXES	
CE Direct	BW	200D	400D	600D	Milk	SS	CARCASE	EMA	RIB	RUMP	IMF	Docility	Maternal	Terminal
+13.4	-2.4	+17	+46	+49	+14	+0.5	+33	+3.6	+0.9	+1.0	+0.4	+19	+\$122	+\$57
83%	96%	94%	95%	95%	83%	94%	85%	80%	88%	86%	80%	95%		

Traits observed: GL CE 200WT 400WT(x2) 600WT(x2) SS FAT EMA IMF DOC

KERRAH EFFICIENT E500

TOKAWEKA HANDSOME AH801

S: KERRAH XFACTOR AX187 (ET)

RISSINGTON AK287

WAIKITE ZACKARIAS AZ0176

D: KERRAH C156

KERRAH Z156

Reg No.: 1667AE0500

Born: 26/09/16

COMMENTS:

Another proven calving ease sire leaving moderate maternal daughters.

2022 AUSTRALASIAN GROUP BREEDPLAN EBVs													INDEXES	
CE Direct	BW	200D	400D	600D	Milk	SS	CARCASE	EMA	RIB	RUMP	IMF	Docility	Maternal	Terminal
+18.9	-3.8	+12	+36	+39	+11	+0.1	+32	+4.0	+1.2	+1.5	+0.0	-8	+\$131	+\$57
75%	93%	89%	90%	89%	60%	88%	77%	70%	78%	76%	69%	89%		

Traits observed: GL CE BWT 200WT 400WT SS FAT EMA IMF DOC

KERRAH GRUMPY G800

RISSINGTON NEW STANDARD AU158

S: GLENSIDE CRUMPY C4

GLENSIDE AW820

KERRAH CHOCO BLOCK C351

D: KERRAH E100

KERRAH C100

Reg No.: 1667180800

Born: 14/09/18

COMMENTS:

Used on heifers for his exceptional docility, calving ease and softness

2022 AUSTRALASIAN GROUP BREEDPLAN EBVs													INDEXES	
CE Direct	BW	200D	400D	600D	Milk	SS	CARCASE	EMA	RIB	RUMP	IMF	Docility	Maternal	Terminal
+9.5	-0.5	+22	+47	+52	+11	-0.1	+35	+3.5	+0.4	+0.3	-0.4	+50	+\$119	+\$56
61%	86%	82%	83%	76%	51%	82%	69%	63%	70%	69%	62%	79%		

Traits observed: CE BWT 200WT 400WT SS FAT EMA IMF DOC

2022 AUSTRALASIAN GROUP BREEDPLAN AVERAGE EBVs													INDEXES	
CE Direct	BW	200D	400D	600D	Milk	SS	CARCASE	EMA	RIB	RUMP	IMF	Docility	Maternal	Terminal
+2.6	+0.6	+20	+37	+46	+8	+0.5	+25	+2.4	+0.5	+0.2	+0.3	+9	+\$86	+\$45

IGENITY

DNA powered selection for commercial herds

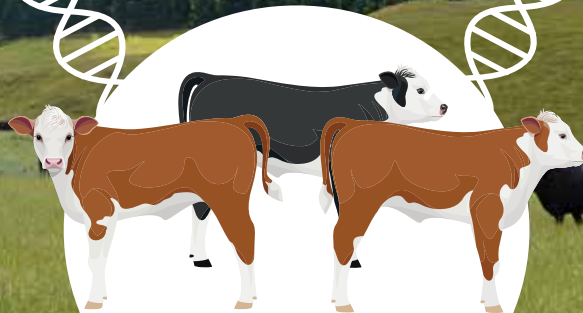
Focus time, feed and resources on breeding young stock of verified merit



Stud Bull EBV's



Igenity Commercial Females



Greater genetic gain & profit

To find out more information

Ella Holland, National Territory Manager

P: 06 323 4484 M: 027 386 2410 E: ella@pbbnz.com pbbnz.com





www.fergusrural.co.nz



Ross Mitchell, Daryl Fergus, Rob Fergus, Tim Petro, Luke Bates, Deano Brensell.

Livestock and Agribusiness Consultants

Wairoa:

Daryl Fergus 027 209 2787

Ross Mitchell 027 404 8965

Gisborne:

Rob Fergus 027 449 6007

Deano Brensell 027 863 8923

Luke Bates 027 421 1653

Environmental Solutions Consultant:

Tim Petro 027 339 0400

Office: admin@fergusrural.co.nz

NEED A SHED OR FARM BUILDING?

Contact us for a quote on your next shed or farm building.

We can custom design your shed to suit your needs & we can also recommend a quality builder to get the job done.



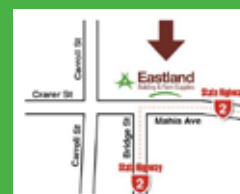
And give us a call for a quote on fencing & building supplies. We hold a large stock of posts, battens, gates & wire plus a wide range of building supplies at competitive prices.



19-21 Mahia Ave, Wairoa Ph: 06 838 6948

Monday - Friday 7:30am - 5:00pm

Saturday 8.30am - 12 noon



Lot. 1

KERRAH J353

DOB 20/09/20



Recommendation	Reg No.	Scrotal
TMH2	1667200353	40cm
Dilution	P/H/Sc	Docility
N	Polled	1.5

GLENSIDE CRUMPY C4

S: KERRAH FIRST CHOICE F360

KERRAH AX9060

WAI-ITI HIGH RISER

D: KERRAH A54

KERRAH AW8054

2022 AUSTRALASIAN GROUP BREEDPLAN EBVs													INDEXES	
CE Direct	BW	200D	400D	600D	Milk	SS	CARCASE	EMA	RIB	RUMP	IMF	Docility	Maternal	Terminal
+9.2	+0.9	+23	+48	+59	+11	+0.0	+31	+2.8	+1.3	+1.8	+0.3	+6	+\$116	+\$54
45%	72%	68%	70%	65%	48%	73%	58%	55%	58%	57%	48%	59%		

Traits observed: CE BWT 200WT 400WT SS FAT EMA IMF DOC

Transferable

COMMENTS: Great all round bull out of great old High Riser cow. Non diluter 9 Tenderness score on DNA. 50 Straws retained for within herd use.

PURCHASER:

PRICE:

Lot. 2

KERRAH J354

DOB 09/09/20



Recommendation	Reg No.	Scrotal
TM	1667200354	40cm
Dilution	P/H/Sc	Docility
C	Polled	1.5

KERRAH BEYOND DOUBT B389

S: KERRAH GO TO G724

KERRAH C224

KERRAH ALLROUNDER A518

D: KERRAH C54

KERRAH A54

2022 AUSTRALASIAN GROUP BREEDPLAN EBVs													INDEXES	
CE Direct	BW	200D	400D	600D	Milk	SS	CARCASE	EMA	RIB	RUMP	IMF	Docility	Maternal	Terminal
+4.8	+2.4	+31	+62	+79	+8	+0.9	+44	+4.8	+1.4	+1.8	+0.0	+16	+\$119	+\$64
41%	71%	66%	68%	61%	41%	54%	55%	52%	55%	54%	45%	55%		

Traits observed: CE BWT 200WT 400WT FAT EMA IMF DOC

Transferable

COMMENTS: Standout bull, huge eye muscle with extra fats and plenty of presence. 50 Straws retained for within herd use.

PURCHASER:

PRICE:

2022 AUSTRALASIAN GROUP BREEDPLAN AVERAGE EBVs													INDEXES	
CE Direct	BW	200D	400D	600D	Milk	SS	CARCASE	EMA	RIB	RUMP	IMF	Docility	Maternal	Terminal
+2.6	+0.6	+20	+37	+46	+8	+0.5	+25	+2.4	+0.5	+0.2	+0.3	+9	+\$86	+\$45

Lot. 3

KERRAH J378

DOB 15/09/20



Recommendation	Reg No.	Scrotal
TH2	1667200378	42cm
Dilution	P/H/Sc	Docility
C	Polled	1.5

GLENSIDE CRUMPY C4

S: KERRAH FIRST CHOICE F360

KERRAH AX9060

KERRAH ZION Z366

D: KERRAH D170

KERRAH AX9070

2022 AUSTRALASIAN GROUP BREEDPLAN EBVs													INDEXES	
CE Direct	BW	200D	400D	600D	Milk	SS	CARCASE	EMA	RIB	RUMP	IMF	Docility	Maternal	Terminal
+5.7	+1.4	+31	+56	+71	+14	+1.3	+40	+3.0	+0.7	+0.9	+0.2	+19	+\$114	+\$56
43%	71%	67%	67%	63%	45%	66%	55%	50%	55%	54%	47%	57%		

Traits observed: CE BWT 200WT 400WT SS FAT EMA IMF DOC

Transferable

COMMENTS: Powerful sire with real presence and big carcass and numbers to prove it.

PURCHASER:

PRICE:

Lot. 4

KERRAH J370

DOB 11/09/20



Recommendation	Reg No.	Scrotal
TMH2	1667200370	45cm
Dilution	P/H/Sc	Docility
C	Polled	1.5

GLENSIDE CRUMPY C4

S: KERRAH FIRST CHOICE F360

KERRAH AX9060

MARCHANT IMPECABLE AJ923

D: KERRAH AX9070

KERRAH AILSA AT6070

2022 AUSTRALASIAN GROUP BREEDPLAN EBVs													INDEXES	
CE Direct	BW	200D	400D	600D	Milk	SS	CARCASE	EMA	RIB	RUMP	IMF	Docility	Maternal	Terminal
+8.1	+0.8	+29	+61	+80	+16	+1.8	+49	+4.2	-0.6	-0.8	-0.2	+19	+\$132	+\$68
46%	73%	68%	68%	65%	50%	67%	57%	52%	57%	56%	47%	59%		

Traits observed: GL CE BWT 200WT 400WT SS FAT EMA IMF DOC

Transferable

COMMENTS: Real curve bender with great growth. Out of great old cow. Big scrotal with high libido.

PURCHASER:

PRICE:

2022 AUSTRALASIAN GROUP BREEDPLAN AVERAGE EBVs													INDEXES	
CE Direct	BW	200D	400D	600D	Milk	SS	CARCASE	EMA	RIB	RUMP	IMF	Docility	Maternal	Terminal
+2.6	+0.6	+20	+37	+46	+8	+0.5	+25	+2.4	+0.5	+0.2	+0.3	+9	+\$86	+\$45

Lot. 5

KERRAH J478

DOB 18/09/20



Recommendation	Reg No.	Scrotal
T	1667200478	41cm
Dilution	P/H/Sc	Docility
N	Polled	2

GLENSIDE CRUMPY C4

S: KERRAH FIRST CHOICE F360

KERRAH AX9060

WAIKITE ZACKARIAS AZ0176

D: KERRAH F178

KERRAH D177

2022 AUSTRALASIAN GROUP BREEDPLAN EBVs													INDEXES	
CE Direct	BW	200D	400D	600D	Milk	SS	CARCASE	EMA	RIB	RUMP	IMF	Docility	Maternal	Terminal
+7.4	+1.8	+32	+67	+85	+10	+1.2	+51	+4.2	-0.1	-0.3	+0.2	+20	+\$131	+\$70
42%	71%	66%	63%	61%	44%	55%	52%	45%	52%	51%	45%	57%		

Traits observed: CE BWT 200WT 400WT SS FAT EMA IMF DOC

Non Transferable

COMMENTS: Great weaner producer with high libido.

PURCHASER:

PRICE:

Lot. 6

KERRAH J477

DOB 14/09/20



Recommendation	Reg No.	Scrotal
TM	1667200477	42cm
Dilution	P/H/Sc	Docility
C	Homo Polled	1

GLENSIDE CRUMPY C4

S: KERRAH FUNDAMENTAL F509

KERRAH A9

KERRAH ZION Z366

D: KERRAH D177

KERRAH Z77

2022 AUSTRALASIAN GROUP BREEDPLAN EBVs													INDEXES	
CE Direct	BW	200D	400D	600D	Milk	SS	CARCASE	EMA	RIB	RUMP	IMF	Docility	Maternal	Terminal
+2.8	+1.8	+33	+59	+70	+12	+1.5	+39	+3.8	+1.4	+1.7	+0.4	+23	+\$107	+\$55
41%	71%	65%	68%	62%	45%	71%	55%	51%	55%	54%	47%	53%		

Traits observed: CE BWT 200WT 400WT SS FAT EMA IMF DOC

Transferable

COMMENTS: Great package, dam a phenomenal producer.

PURCHASER:

PRICE:

2022 AUSTRALASIAN GROUP BREEDPLAN AVERAGE EBVs													INDEXES	
CE Direct	BW	200D	400D	600D	Milk	SS	CARCASE	EMA	RIB	RUMP	IMF	Docility	Maternal	Terminal
+2.6	+0.6	+20	+37	+46	+8	+0.5	+25	+2.4	+0.5	+0.2	+0.3	+9	+\$86	+\$45

Lot. 7

KERRAH J352

DOB 25/09/20



Recommendation	Reg No.	Scrotal
TMH2	1667200352	41cm
Dilution	P/H/Sc	Docility
C	Homo Polled	1.5

KERRAH CAPTAIN C400

S: KERRAH FAT CAT F576

KERRAH B176

KERRAH WITHOUT DOUBT AW68

D: KERRAH A152

KERRAH CX9154

2022 AUSTRALASIAN GROUP BREEDPLAN EBVs													INDEXES	
CE Direct	BW	200D	400D	600D	Milk	SS	CARCASE	EMA	RIB	RUMP	IMF	Docility	Maternal	Terminal
+6.0	+1.1	+21	+44	+62	+10	+0.7	+32	+1.9	+1.1	+1.5	+0.1	-4	+\$110	+\$44
41%	71%	66%	68%	62%	46%	71%	55%	51%	55%	55%	45%	54%		

Traits observed: CE BWT 200WT 400WT SS FAT EMA IMF DOC

Transferable

COMMENTS: Attractive bull with ticking just about all the boxes.

PURCHASER:

PRICE:

Lot. 8

KERRAH J518

DOB 04/10/20



Recommendation	Reg No.	Scrotal
TM	1667200518	40cm
Dilution	P/H/Sc	Docility
N	Homo Polled	2

TE RAUMAUKU ANACONDA A13

S: KERRAH FINE TUNED F385

KERRAH C100

TE RAUMAUKU NO WORRIES AN8

D: KERRAH AY118

RISSINGTON AR118

2022 AUSTRALASIAN GROUP BREEDPLAN EBVs													INDEXES	
CE Direct	BW	200D	400D	600D	Milk	SS	CARCASE	EMA	RIB	RUMP	IMF	Docility	Maternal	Terminal
-0.6	+3.3	+33	+63	+80	+13	+0.8	+41	+1.9	-0.1	-0.3	-0.2	+4	+\$84	+\$51
43%	72%	68%	70%	65%	48%	73%	57%	53%	57%	57%	47%	58%		

Traits observed: CE BWT 200WT 400WT SS FAT EMA IMF DOC

Transferable

COMMENTS: Stylish bull from great old cow.

PURCHASER:

PRICE:

2022 AUSTRALASIAN GROUP BREEDPLAN AVERAGE EBVs													INDEXES	
CE Direct	BW	200D	400D	600D	Milk	SS	CARCASE	EMA	RIB	RUMP	IMF	Docility	Maternal	Terminal
+2.6	+0.6	+20	+37	+46	+8	+0.5	+25	+2.4	+0.5	+0.2	+0.3	+9	+\$86	+\$45

Lot. 9

KERRAH J393

DOB 20/09/20



Recommendation	Reg No.	Scrotal
TM	1667200393	42cm
Dilution	P/H/Sc	Docility
C	Homo Polled	2

RUAVIEW PINETREE AC6

S: GLENSIDE FRONTIER F19

GLENSIDE A207

KERRAH WITHOUT DOUBT AW68

D: KERRAH D193

KERRAH Z193

2022 AUSTRALASIAN GROUP BREEDPLAN EBVs													INDEXES	
CE Direct	BW	200D	400D	600D	Milk	SS	CARCASE	EMA	RIB	RUMP	IMF	Docility	Maternal	Terminal
+1.6	+2.2	+29	+60	+74	+10	+0.9	+40	+2.6	+1.5	+1.8	+0.5	+3	+\$97	+\$51
41%	71%	66%	68%	62%	44%	70%	55%	51%	56%	55%	48%	56%		

Traits observed: CE BWT 200WT 400WT SS FAT EMA IMF DOC

Transferable

COMMENTS: Good all round bull, Dam has great barrel and constitution.

PURCHASER:

PRICE:

Lot. 10

KERRAH J366

DOB 14/09/20



Recommendation	Reg No.	Scrotal
TM	1667200366	39cm
Dilution	P/H/Sc	Docility
C	Homo Polled	2

GLENSIDE CRUMPY C4

S: KERRAH FIRST CHOICE F360

KERRAH AX9060

KERRAH ALLROUNDER A518

D: KERRAH C166

KERRAH A166

2022 AUSTRALASIAN GROUP BREEDPLAN EBVs													INDEXES	
CE Direct	BW	200D	400D	600D	Milk	SS	CARCASE	EMA	RIB	RUMP	IMF	Docility	Maternal	Terminal
+6.6	+2.3	+33	+65	+80	+10	+0.4	+44	+3.4	+0.9	+0.7	+0.0	+3	+\$111	+\$64
44%	72%	68%	70%	65%	46%	73%	58%	54%	58%	57%	48%	59%		

Traits observed: CE BWT 200WT 400WT SS FAT EMA IMF DOC

Non Transferable

COMMENTS: Great performance bull. Homo Polled good cow family.

PURCHASER:

PRICE:

2022 AUSTRALASIAN GROUP BREEDPLAN AVERAGE EBVs													INDEXES	
CE Direct	BW	200D	400D	600D	Milk	SS	CARCASE	EMA	RIB	RUMP	IMF	Docility	Maternal	Terminal
+2.6	+0.6	+20	+37	+46	+8	+0.5	+25	+2.4	+0.5	+0.2	+0.3	+9	+\$86	+\$45

Lot. 11

KERRAH J340

DOB 15/09/20



Recommendation	Reg No.	Scrotal
TMH2H1	1667200340	41cm
Dilution	P/H/Sc	Docility
C	Polled	1

GLENSIDE CRUMPY C4

S: KERRAH FIRST CHOICE F360

KERRAH AX9060

KERRAH XFACTOR AX187 (ET)

D: KERRAH B140

KERRAH Z240

2022 AUSTRALASIAN GROUP BREEDPLAN EBVs													INDEXES	
CE Direct	BW	200D	400D	600D	Milk	SS	CARCASE	EMA	RIB	RUMP	IMF	Docility	Maternal	Terminal
+11.3	+0.4	+27	+63	+76	+13	+1.0	+49	+4.5	-0.3	-0.5	-0.1	+36	+\$138	+\$73
46%	73%	69%	71%	66%	48%	74%	59%	55%	59%	58%	51%	60%		

Traits observed: CE BWT 200WT 400WT SS FAT EMA IMF DOC

Transferable

COMMENTS: Great bull, very docile, from top performing cow.

PURCHASER:

PRICE:

Lot. 12

KERRAH J312

DOB 22/10/20



Recommendation	Reg No.	Scrotal
TM	1667200312	40cm
Dilution	P/H/Sc	Docility
N	Polled	2

KERRAH EXCLUSIVE E545

S: KERRAH G821

KERRAH E121

RISSINGTON AFTER SHOCK AA1020

D: KERRAH C224

KERRAH CY26

2022 AUSTRALASIAN GROUP BREEDPLAN EBVs													INDEXES	
CE Direct	BW	200D	400D	600D	Milk	SS	CARCASE	EMA	RIB	RUMP	IMF	Docility	Maternal	Terminal
-4.0	+4.1	+34	+64	+83	+10	+1.1	+44	+4.3	+0.9	+1.0	-0.1	+9	+\$70	+\$51
36%	66%	61%	65%	60%	42%	70%	53%	50%	51%	51%	42%	48%		

Traits observed: CE BWT 200WT 400WT SS FAT EMA IMF DOC

Transferable

COMMENTS: Very late born bull, powerful bull suit MA cows. 50 Straws retained for with in herd use.

PURCHASER:

PRICE:

2022 AUSTRALASIAN GROUP BREEDPLAN AVERAGE EBVs													INDEXES	
CE Direct	BW	200D	400D	600D	Milk	SS	CARCASE	EMA	RIB	RUMP	IMF	Docility	Maternal	Terminal
+2.6	+0.6	+20	+37	+46	+8	+0.5	+25	+2.4	+0.5	+0.2	+0.3	+9	+\$86	+\$45

Lot. 13

KERRAH J439

DOB 19/09/20



Recommendation	Reg No.	Scrotal
TMH2	1667200439	40cm
Dilution	P/H/Sc	Docility
N	Polled	1

KERRAH BEYOND DOUBT B389

S: KERRAH GO TO G724

KERRAH C224

KERRAH YES SIR AY393

D: KERRAH E39

KERRAH Z129

2022 AUSTRALASIAN GROUP BREEDPLAN EBVs													INDEXES	
CE Direct	BW	200D	400D	600D	Milk	SS	CARCASE	EMA	RIB	RUMP	IMF	Docility	Maternal	Terminal
+6.4	+1.3	+25	+51	+68	+7	+0.7	+37	+3.8	+0.9	+1.1	+0.1	+29	+\$115	+\$55
40%	71%	66%	68%	62%	40%	71%	55%	51%	55%	54%	46%	55%		

Traits observed: CE BWT 200WT 400WT SS FAT EMA IMF DOC

Transferable

COMMENTS: Eye catching bull with performance all the way through the traits.

PURCHASER:

PRICE:

Lot. 14

KERRAH J464

DOB 09/09/20



Recommendation	Reg No.	Scrotal
TM	1667200464	40cm
Dilution	P/H/Sc	Docility
N	Polled	2

KERRAH ALLROUNDER A518

S: KERRAH FOREMAN F349

KERRAH AW8049

RISSINGTON AFTER SHOCK AA1020

D: KERRAH F264

KERRAH CY64

2022 AUSTRALASIAN GROUP BREEDPLAN EBVs													INDEXES	
CE Direct	BW	200D	400D	600D	Milk	SS	CARCASE	EMA	RIB	RUMP	IMF	Docility	Maternal	Terminal
+3.3	+2.2	+28	+49	+65	+10	+0.4	+35	+3.1	+1.9	+2.3	-0.3	+5	+\$92	+\$47
40%	70%	65%	67%	62%	44%	71%	54%	51%	53%	53%	44%	53%		

Traits observed: CE BWT 200WT 400WT SS FAT EMA IMF DOC

Transferable

COMMENTS: Very good bull with great pedigree, moves well. Great fats to go with ample growth.

PURCHASER:

PRICE:

2022 AUSTRALASIAN GROUP BREEDPLAN AVERAGE EBVs													INDEXES	
CE Direct	BW	200D	400D	600D	Milk	SS	CARCASE	EMA	RIB	RUMP	IMF	Docility	Maternal	Terminal
+2.6	+0.6	+20	+37	+46	+8	+0.5	+25	+2.4	+0.5	+0.2	+0.3	+9	+\$86	+\$45

Lot. 15

KERRAH J516

DOB 30/10/20



Recommendation	Reg No.	Scrotal
TM	1667200516	39cm
Dilution	P/H/Sc	Docility
N	Polled	1.5

LEAFLAND CAPTAIN C1

S: LEAFLAND AF32

LEAFLAND C74

WAIKITE AC2069

D: KERRAH F16

KERRAH B16

2022 AUSTRALASIAN GROUP BREEDPLAN EBVs													INDEXES	
CE Direct	BW	200D	400D	600D	Milk	SS	CARCASE	EMA	RIB	RUMP	IMF	Docility	Maternal	Terminal
-4.1	+3.1	+33	+59	+72	+10	+1.5	+37	+3.9	+0.7	+0.6	+0.7	+9	+\$68	+\$42
38%	65%	60%	58%	57%	39%	47%	47%	38%	46%	46%	40%	47%		

Traits observed: GL CE BWT 200WT 400WT SS FAT EMA IMF DOC
Transferable

COMMENTS: Another late born bull that has done well, exceptional young cow. Good carcass traits. 50 Straws retained for within herd use.

PURCHASER:

PRICE:

Lot. 16

KERRAH J421

DOB 20/09/20



Recommendation	Reg No.	Scrotal
TH2	1667200421	41cm
Dilution	P/H/Sc	Docility
N	Homo Polled	1.5

RUAVIEW PINETREE AC6

S: GLENSIDE FRONTIER F19

GLENSIDE A207

KERRAH BANDWAGON B306

D: KERRAH E21

KERRAH B21

2022 AUSTRALASIAN GROUP BREEDPLAN EBVs													INDEXES	
CE Direct	BW	200D	400D	600D	Milk	SS	CARCASE	EMA	RIB	RUMP	IMF	Docility	Maternal	Terminal
+5.1	+0.9	+25	+49	+66	+14	+1.8	+36	+2.8	+1.4	+2.0	+0.9	+4	+\$89	+\$48
40%	71%	66%	68%	62%	42%	70%	55%	50%	55%	54%	47%	55%		

Traits observed: CE BWT 200WT 400WT SS FAT EMA IMF DOC
Transferable

COMMENTS: Very good carcass and very docile.

PURCHASER:

PRICE:

2022 AUSTRALASIAN GROUP BREEDPLAN AVERAGE EBVs													INDEXES	
CE Direct	BW	200D	400D	600D	Milk	SS	CARCASE	EMA	RIB	RUMP	IMF	Docility	Maternal	Terminal
+2.6	+0.6	+20	+37	+46	+8	+0.5	+25	+2.4	+0.5	+0.2	+0.3	+9	+\$86	+\$45

Lot. 17

KERRAH J336

DOB 21/09/20



Recommendation	Reg No.	Scrotal
T	1667200336	45cm
Dilution	P/H/Sc	Docility
N	Homo Polled	1.5

KERRAH EMPEROR E440

S: KERRAH G746

KERRAH D246

KERRAH ZION Z366

D: KERRAH D36

KERRAH A37

2022 AUSTRALASIAN GROUP BREEDPLAN EBVs													INDEXES	
CE Direct	BW	200D	400D	600D	Milk	SS	CARCASE	EMA	RIB	RUMP	IMF	Docility	Maternal	Terminal
+0.0	+2.5	+26	+52	+67	+7	+2.6	+32	+2.2	+1.0	+1.1	+0.1	+17	+\$78	+\$42
38%	70%	65%	67%	61%	41%	70%	54%	50%	54%	53%	45%	52%		

Traits observed: CE BWT 200WT 400WT SS FAT EMA IMF DOC

Transferable

COMMENTS: Great barrel and bone, well grown twin, great terminal sire.

PURCHASER:

PRICE:

Lot. 18

KERRAH J358

DOB 14/10/20



Recommendation	Reg No.	Scrotal
T	1667200358	43cm
Dilution	P/H/Sc	Docility
C	Homo Polled	2

TE RAUMAUKU DEEP GUTS D25

S: KERRAH GUTSY G716

KERRAH A216

STEINADLER A041910 (IMP GER)

D: KERRAH Z59

PROSPECT AW59

2022 AUSTRALASIAN GROUP BREEDPLAN EBVs													INDEXES	
CE Direct	BW	200D	400D	600D	Milk	SS	CARCASE	EMA	RIB	RUMP	IMF	Docility	Maternal	Terminal
-1.4	+1.9	+26	+54	+77	+14	+2.4	+40	+2.6	-0.9	-1.0	+0.1	+3	+\$75	+\$45
40%	70%	65%	62%	58%	45%	51%	50%	40%	48%	47%	40%	54%		

Traits observed: CE BWT 200WT(x2) 400WT SS FAT EMA IMF DOC

Non Transferable

COMMENTS: Attractive bull with lots of growth and CW.

PURCHASER:

PRICE:

2022 AUSTRALASIAN GROUP BREEDPLAN AVERAGE EBVs													INDEXES	
CE Direct	BW	200D	400D	600D	Milk	SS	CARCASE	EMA	RIB	RUMP	IMF	Docility	Maternal	Terminal
+2.6	+0.6	+20	+37	+46	+8	+0.5	+25	+2.4	+0.5	+0.2	+0.3	+9	+\$86	+\$45

Lot. 19

KERRAH J420

DOB 23/09/20



Recommendation	Reg No.	Scrotal
T	1667200420	38cm
Dilution	P/H/Sc	Docility
N	Homo Polled	1.5

KERRAH EMPEROR E440

S: KERRAH G746

KERRAH D246

KERRAH ZION Z366

D: KERRAH D120

KERRAH AU7020

2022 AUSTRALASIAN GROUP BREEDPLAN EBVs													INDEXES	
CE Direct	BW	200D	400D	600D	Milk	SS	CARCASE	EMA	RIB	RUMP	IMF	Docility	Maternal	Terminal
-1.2	+3.2	+29	+57	+69	+9	+1.3	+37	+2.8	+0.9	+1.0	+0.0	+28	+73	+46
40%	70%	65%	68%	62%	41%	71%	54%	51%	54%	53%	45%	53%		

Traits observed: CE BWT 200WT 400WT SS FAT EMA IMF DOC

Non Transferable

COMMENTS: Long bodied bull with good cosmetics.

PURCHASER:

PRICE:

Lot. 20

KERRAH J549

DOB 19/09/20



Recommendation	Reg No.	Scrotal
TH2	1667200549	40cm
Dilution	P/H/Sc	Docility
N	Polled	1.5

TE RAUMAUKU ANACONDA A13

S: KERRAH FINE TUNED F385

KERRAH C100

RISSINGTON AFTER SHOCK AA1020

D: KERRAH F49

KERRAH A149

2022 AUSTRALASIAN GROUP BREEDPLAN EBVs													INDEXES	
CE Direct	BW	200D	400D	600D	Milk	SS	CARCASE	EMA	RIB	RUMP	IMF	Docility	Maternal	Terminal
+4.4	+2.0	+26	+56	+65	+9	+0.7	+36	+2.9	+0.5	+0.5	+0.0	+30	+106	+54
41%	72%	66%	68%	64%	41%	71%	56%	52%	56%	55%	47%	55%		

Traits observed: GL CE BWT 200WT 400WT SS FAT EMA IMF DOC

Transferable

COMMENTS: Good performance though out still in the top 35% for EMA and rump fat.

PURCHASER:

PRICE:

2022 AUSTRALASIAN GROUP BREEDPLAN AVERAGE EBVs													INDEXES	
CE Direct	BW	200D	400D	600D	Milk	SS	CARCASE	EMA	RIB	RUMP	IMF	Docility	Maternal	Terminal
+2.6	+0.6	+20	+37	+46	+8	+0.5	+25	+2.4	+0.5	+0.2	+0.3	+9	+\$86	+\$45

Breeding Better Business

As part of New Zealand's largest Livestock network, our team of Genetics Specialists have more contacts, more reach and more market influence.

We provide more practical advice and more technical expertise. And, with the country's largest network and most popular sales events, we bring together more buyers and more sellers, delivering more value for all.

If you're looking for a planned approach to success, give us a call today.



fb.com/pgwgenetics
instagram.com/pgwgenetics

Emma Pollitt
Genetics Representative
027 597 5821

Phil Transom
Auctioneer
027 442 0060

Jamie Hayward
Livestock Manager
027 434 7586

Maurice Stewart
Livestock Manager
027 246 9255

Ian Risetto
Livestock Representative
027 444 9347

Mason Birrell
Livestock Representative
027 496 7253

PGG Wrightson

BrokerWeb
RISK SERVICES
Your Insurance Partner

Bull insurance?
Yes, we can help.

See your local BrokerWeb Risk Services (BWRS) rep at the sale. Or contact your PGG Wrightson Livestock rep. Bulls cover available at the fall of the hammer, and billed direct to your PGG Wrightson Livestock account.

Farmlands Wairoa is pleased to support the Kerrah Simmental Bull Sale.

**For all your rural requirements
in-store and on the Farmlands Card.**

- Rural Supplies
- Farmlands Card
- Fuel
- Horticulture
- Livestock
- Nutrition
- Grain and Seed
- Oil and Lubricant
- Real Estate



Wairoa
Bridge Street
(06) 838 7209
wairoa@farmlands.co.nz

Farmlands
co-operative

Lot. 21

KERRAH J344

DOB 08/10/20



Recommendation	Reg No.	Scrotal
TMH2	1667200344	40cm
Dilution	P/H/Sc	Docility
N	Polled	1.5

GLENSIDE CRUMPY C4

S: KERRAH FIRST CHOICE F360

KERRAH AX9060

KERRAH WITHOUT DOUBT AW68

D: KERRAH B141

KERRAH AW8040

2022 AUSTRALASIAN GROUP BREEDPLAN EBVs													INDEXES	
CE Direct	BW	200D	400D	600D	Milk	SS	CARCASE	EMA	RIB	RUMP	IMF	Docility	Maternal	Terminal
+8.7	+0.9	+24	+53	+64	+11	+0.4	+38	+3.9	-0.2	-0.5	-0.2	+20	+\$124	+\$62
44%	71%	68%	70%	65%	47%	72%	57%	54%	57%	57%	49%	58%		

Traits observed: CE BWT 200WT 400WT SS FAT EMA IMF DOC

Transferable

COMMENTS: Well balanced bull with very good structure.

PURCHASER:

PRICE:

Lot. 22

KERRAH J300

DOB 15/09/20



Recommendation	Reg No.	Scrotal
TMH2	1667200300	45cm
Dilution	P/H/Sc	Docility
N	Polled	1.5

KERRAH BIG BOY B449

S: KERRAH FLAMBOYANT F403

KERRAH Z3

KERRAH AWESOME A404

D: KERRAH D119

RISSINGTON AP1419

2022 AUSTRALASIAN GROUP BREEDPLAN EBVs													INDEXES	
CE Direct	BW	200D	400D	600D	Milk	SS	CARCASE	EMA	RIB	RUMP	IMF	Docility	Maternal	Terminal
+4.2	+1.9	+26	+60	+69	+8	+2.0	+44	+4.6	+0.3	+0.2	-0.1	+10	+\$124	+\$62
43%	71%	67%	69%	65%	45%	72%	57%	52%	55%	55%	47%	58%		

Traits observed: CE BWT 200WT 400WT SS FAT EMA IMF DOC

Transferable

COMMENTS: Start of the second mob and real ripper. One of the best.

PURCHASER:

PRICE:

2022 AUSTRALASIAN GROUP BREEDPLAN AVERAGE EBVs													INDEXES	
CE Direct	BW	200D	400D	600D	Milk	SS	CARCASE	EMA	RIB	RUMP	IMF	Docility	Maternal	Terminal
+2.6	+0.6	+20	+37	+46	+8	+0.5	+25	+2.4	+0.5	+0.2	+0.3	+9	+\$86	+\$45

Lot. 23

KERRAH J494

DOB 24/09/20



Recommendation	Reg No.	Scrotal
T	1667200494	41cm
Dilution	P/H/Sc	Docility
N	Polled	1.5

WAIKITE AC2069

S: KERRAH G891

KERRAH D191

WAIKITE ZACKARIAS AZ0176

D: KERRAH D194

KERRAH B194

2022 AUSTRALASIAN GROUP BREEDPLAN EBVs													INDEXES	
CE Direct	BW	200D	400D	600D	Milk	SS	CARCASE	EMA	RIB	RUMP	IMF	Docility	Maternal	Terminal
+5.0	+1.8	+29	+64	+75	+11	+0.7	+48	+3.1	-0.5	-1.1	+0.2	+22	+\$118	+\$61
39%	70%	65%	66%	61%	43%	67%	53%	49%	52%	52%	44%	51%		

Traits observed: CE BWT 200WT 400WT SS FAT EMA IMF DOC

Transferable

COMMENTS: Outstanding terminal sire.

PURCHASER:

PRICE:

Lot. 24

KERRAH J506

DOB 25/09/20



Recommendation	Reg No.	Scrotal
T	1667200506	42cm
Dilution	P/H/Sc	Docility
N	Polled	1.5

KERRAH CAPTAIN C400

S: KERRAH FAT CAT F576

KERRAH B176

POTAWA BONO

D: KERRAH E106

LEEANNE AP106

2022 AUSTRALASIAN GROUP BREEDPLAN EBVs													INDEXES	
CE Direct	BW	200D	400D	600D	Milk	SS	CARCASE	EMA	RIB	RUMP	IMF	Docility	Maternal	Terminal
-0.4	+3.8	+36	+70	+93	+14	+1.6	+52	+4.6	+0.1	+0.3	+0.1	+5	+\$100	+\$63
38%	69%	64%	67%	61%	41%	70%	53%	50%	53%	53%	44%	51%		

Traits observed: CE BWT 200WT 400WT SS FAT EMA IMF DOC

Transferable

COMMENTS: Again a powerful package and with outstanding performance.

PURCHASER:

PRICE:

2022 AUSTRALASIAN GROUP BREEDPLAN AVERAGE EBVs													INDEXES	
CE Direct	BW	200D	400D	600D	Milk	SS	CARCASE	EMA	RIB	RUMP	IMF	Docility	Maternal	Terminal
+2.6	+0.6	+20	+37	+46	+8	+0.5	+25	+2.4	+0.5	+0.2	+0.3	+9	+\$86	+\$45

Lot. 25

KERRAH J337

DOB 18/09/20



Recommendation	Reg No.	Scrotal
T	1667200337	41cm
Dilution	P/H/Sc	Docility
C	Polled	2

KERRAH BIG BOY B449

S: KERRAH FLAMBOYANT F403

KERRAH Z3

KERRAH ASSURE A533

D: KERRAH C37

KERRAH A37

2022 AUSTRALASIAN GROUP BREEDPLAN EBVs													INDEXES	
CE Direct	BW	200D	400D	600D	Milk	SS	CARCASE	EMA	RIB	RUMP	IMF	Docility	Maternal	Terminal
-2.2	+3.7	+33	+68	+86	+7	+1.5	+50	+3.9	-0.4	-0.9	-0.1	-15	+\$86	+\$56
42%	72%	68%	70%	65%	44%	72%	57%	53%	57%	57%	48%	58%		

Traits observed: CE BWT 200WT 400WT SS FAT EMA IMF DOC

Non Transferable

COMMENTS: Another powerful Terminal sire suited to MA cows.

PURCHASER:

PRICE:

Lot. 26

KERRAH J489

DOB 13/09/20



Recommendation	Reg No.	Scrotal
TM	1667200489	40cm
Dilution	P/H/Sc	Docility
N	Polled	1

TE RAUMAUKU ANACONDA A13

S: KERRAH FINE TUNED F385

KERRAH C100

AILSA G.R. MAJOR AM2114

D: KERRAH AY89

KERRAH BU7189

2022 AUSTRALASIAN GROUP BREEDPLAN EBVs													INDEXES	
CE Direct	BW	200D	400D	600D	Milk	SS	CARCASE	EMA	RIB	RUMP	IMF	Docility	Maternal	Terminal
+3.8	+2.9	+33	+61	+80	+13	+1.1	+43	+4.2	-0.1	-0.2	+0.1	+21	+\$111	+\$62
44%	73%	68%	70%	65%	47%	73%	58%	54%	58%	57%	49%	59%		

Traits observed: CE BWT 200WT 400WT SS FAT EMA IMF DOC

Transferable

COMMENTS: Top end of the catalogue. Very quiet, great feet. Dam is mother of Kerrah Faultline.

PURCHASER:

PRICE:

2022 AUSTRALASIAN GROUP BREEDPLAN AVERAGE EBVs													INDEXES	
CE Direct	BW	200D	400D	600D	Milk	SS	CARCASE	EMA	RIB	RUMP	IMF	Docility	Maternal	Terminal
+2.6	+0.6	+20	+37	+46	+8	+0.5	+25	+2.4	+0.5	+0.2	+0.3	+9	+\$86	+\$45

Lot. 27

KERRAH J450

DOB 05/10/20



Recommendation	Reg No.	Scrotal
TMH2	1667200450	39cm
Dilution	P/H/Sc	Docility
C	Homo Polled	2

KERRAH ALLROUNDER A518

S: KERRAH FORTRESS F326

KERRAH A67

IDESIA YIDDISH AY443

D: KERRAH B50

KERRAH Z50 (ET)

2022 AUSTRALASIAN GROUP BREEDPLAN EBVs													INDEXES	
CE Direct	BW	200D	400D	600D	Milk	SS	CARCASE	EMA	RIB	RUMP	IMF	Docility	Maternal	Terminal
+9.0	+0.4	+23	+48	+60	+11	+0.8	+36	+2.4	+0.7	+0.6	+0.1	+32	+\$116	+\$52
42%	72%	66%	69%	65%	44%	70%	56%	52%	57%	56%	48%	59%		

Traits observed: CE BWT 400WT SS FAT EMA IMF DOC

Transferable

COMMENTS: Well balanced homo polled bull.

PURCHASER:

PRICE:

Lot. 28

KERRAH J364

DOB 04/09/20



Recommendation	Reg No.	Scrotal
TMH2	1667200364	42cm
Dilution	P/H/Sc	Docility
C	Polled	2

TE RAUMAUKU DEEP GUTS D25

S: KERRAH GUTSY G716

KERRAH A216

IDESIA BANDANA

D: KERRAH E164

KERRAH AX9064

2022 AUSTRALASIAN GROUP BREEDPLAN EBVs													INDEXES	
CE Direct	BW	200D	400D	600D	Milk	SS	CARCASE	EMA	RIB	RUMP	IMF	Docility	Maternal	Terminal
+4.9	+0.4	+23	+48	+67	+11	+2.4	+38	+3.1	+0.3	+0.3	-0.1	+0	+\$110	+\$50
38%	70%	65%	67%	61%	40%	69%	54%	49%	54%	53%	45%	53%		

Traits observed: CE BWT 200WT 400WT SS FAT EMA IMF DOC

Non Transferable

COMMENTS: Displays good length and depth.

PURCHASER:

PRICE:

2022 AUSTRALASIAN GROUP BREEDPLAN AVERAGE EBVs													INDEXES	
CE Direct	BW	200D	400D	600D	Milk	SS	CARCASE	EMA	RIB	RUMP	IMF	Docility	Maternal	Terminal
+2.6	+0.6	+20	+37	+46	+8	+0.5	+25	+2.4	+0.5	+0.2	+0.3	+9	+\$86	+\$45

Lot. 29

KERRAH J309

DOB 18/09/20



Recommendation	Reg No.	Scrotal
TM	1667200309	40cm
Dilution	P/H/Sc	Docility
C	Polled	2

TE RAUMAUKU ANACONDA A13

S: KERRAH FINE TUNED F385

KERRAH C100

GLENSIDE XECUTIVE AX14

D: KERRAH A9

KERRAH AY9

2022 AUSTRALASIAN GROUP BREEDPLAN EBVs													INDEXES	
CE Direct	BW	200D	400D	600D	Milk	SS	CARCASE	EMA	RIB	RUMP	IMF	Docility	Maternal	Terminal
+4.2	+1.7	+29	+52	+63	+9	+1.3	+36	+3.9	+0.5	+0.4	-0.1	+9	+\$103	+\$54
43%	72%	67%	69%	64%	46%	72%	57%	53%	57%	56%	47%	58%		

Traits observed: CE BWT 200WT 400WT SS FAT EMA IMF DOC

Non Transferable

COMMENTS: Good length out of well performed cow.

PURCHASER:

PRICE:

Lot. 30

KERRAH J371

DOB 03/10/20



Recommendation	Reg No.	Scrotal
TM	1667200371	42cm
Dilution	P/H/Sc	Docility
N	Polled	2

RUAVIEW PINETREE AC6

S: GLENSIDE FRONTIER F19

GLENSIDE A207

KERRAH XFACTOR AX187 (ET)

D: KERRAH C71

KERRAH Z271

2022 AUSTRALASIAN GROUP BREEDPLAN EBVs													INDEXES	
CE Direct	BW	200D	400D	600D	Milk	SS	CARCASE	EMA	RIB	RUMP	IMF	Docility	Maternal	Terminal
+6.0	+1.2	+28	+56	+69	+11	+1.4	+41	+3.1	+0.8	+1.0	+0.1	+10	+\$114	+\$57
43%	72%	67%	69%	63%	46%	71%	56%	52%	57%	56%	48%	57%		

Traits observed: CE BWT 200WT 400WT SS FAT EMA IMF DOC

Non Transferable

COMMENTS: Sire Glenside Frontier was top performing sire for WW in his cohort of Beef + Lamb NZ progeny test.

PURCHASER:

PRICE:

2022 AUSTRALASIAN GROUP BREEDPLAN AVERAGE EBVs													INDEXES	
CE Direct	BW	200D	400D	600D	Milk	SS	CARCASE	EMA	RIB	RUMP	IMF	Docility	Maternal	Terminal
+2.6	+0.6	+20	+37	+46	+8	+0.5	+25	+2.4	+0.5	+0.2	+0.3	+9	+\$86	+\$45

Lot. 31

KERRAH J367

DOB 01/10/20



Recommendation	Reg No.	Scrotal
TMH2H1	1667200367	44cm
Dilution	P/H/Sc	Docility
C	Polled	1.5

GLENSIDE CRUMPY C4

S: KERRAH FIRST CHOICE F360

KERRAH AX9060

KERRAH XCITING AX57

D: KERRAH A67

KERRAH AW8067

2022 AUSTRALASIAN GROUP BREEDPLAN EBVs													INDEXES	
CE Direct	BW	200D	400D	600D	Milk	SS	CARCASE	EMA	RIB	RUMP	IMF	Docility	Maternal	Terminal
+10.5	-1.1	+21	+46	+64	+14	+2.0	+38	+3.0	+0.3	+0.3	+0.2	+11	+\$122	+\$55
44%	72%	68%	70%	65%	46%	73%	58%	54%	56%	56%	47%	60%		

Traits observed: CE BWT 200WT 400WT SS FAT EMA IMF DOC

Transferable

COMMENTS: Great heifer bull, very easy calving, ½ brother to Kerrah Allrounder.

PURCHASER:

PRICE:

Lot. 32

KERRAH J320

DOB 22/09/20



Recommendation	Reg No.	Scrotal
TM	1667200320	39cm
Dilution	P/H/Sc	Docility
C	Polled	2

WAIKITE AC2069

S: KERRAH G891

KERRAH D191

ELLINGSON KLONDIKE Y123 (IMP USA)

D: KERRAH F20 (ET)

KERRAH AW8020

2022 AUSTRALASIAN GROUP BREEDPLAN EBVs													INDEXES	
CE Direct	BW	200D	400D	600D	Milk	SS	CARCASE	EMA	RIB	RUMP	IMF	Docility	Maternal	Terminal
+6.0	+1.4	+33	+65	+84	+13	+1.1	+49	+4.6	-0.4	-1.0	+0.2	+2	+\$119	+\$65
38%	68%	63%	59%	57%	42%	50%	48%	40%	44%	44%	39%	52%		

Traits observed: CE BWT 200WT 400WT SS FAT EMA IMF DOC

Non Transferable

COMMENTS: Outstanding performance.

PURCHASER:

PRICE:

2022 AUSTRALASIAN GROUP BREEDPLAN AVERAGE EBVs													INDEXES	
CE Direct	BW	200D	400D	600D	Milk	SS	CARCASE	EMA	RIB	RUMP	IMF	Docility	Maternal	Terminal
+2.6	+0.6	+20	+37	+46	+8	+0.5	+25	+2.4	+0.5	+0.2	+0.3	+9	+\$86	+\$45

Lot. 33

KERRAH J403

DOB 14/09/20



Recommendation	Reg No.	Scrotal
TM	1667200403	41cm
Dilution	P/H/Sc	Docility
C	Polled	2.5

TE RAUMAUKU ANACONDA A13

S: KERRAH FINE TUNED F385

KERRAH C100

GLENSIDE ATOMIC A5

D: KERRAH D103

KERRAH CY103

2022 AUSTRALASIAN GROUP BREEDPLAN EBVs													INDEXES	
CE Direct	BW	200D	400D	600D	Milk	SS	CARCASE	EMA	RIB	RUMP	IMF	Docility	Maternal	Terminal
+0.9	+2.6	+34	+64	+75	+11	+1.5	+45	+5.0	+0.3	+0.0	-0.2	+12	+\$105	+\$62
42%	72%	67%	69%	64%	43%	71%	56%	53%	57%	56%	49%	56%		

Traits observed: CE BWT 200WT 400WT SS FAT EMA IMF DOC

Non Transferable

COMMENTS: Superb early growth dam has one of the best bull calves again this year.

PURCHASER:

PRICE:

Lot. 34

KERRAH J356

DOB 14/09/20



Recommendation	Reg No.	Scrotal
TMH2H1	1667200356	42cm
Dilution	P/H/Sc	Docility
N	Polled	2

RUAVIEW PINETREE AC6

S: GLENSIDE FRONTIER F19

GLENSIDE A207

WAIKITE ZACKARIAS AZ0176

D: KERRAH C56

KERRAH Z56

2022 AUSTRALASIAN GROUP BREEDPLAN EBVs													INDEXES	
CE Direct	BW	200D	400D	600D	Milk	SS	CARCASE	EMA	RIB	RUMP	IMF	Docility	Maternal	Terminal
+11.0	-0.7	+20	+46	+59	+12	+1.1	+39	+3.3	+0.8	+1.0	+0.4	-5	+\$124	+\$56
41%	71%	66%	69%	63%	44%	71%	55%	51%	56%	55%	46%	56%		

Traits observed: CE BWT 200WT 400WT SS FAT EMA IMF DOC

Transferable

COMMENTS: Low birth with exceptional early growth, moderate and soft.

PURCHASER:

PRICE:

2022 AUSTRALASIAN GROUP BREEDPLAN AVERAGE EBVs													INDEXES	
CE Direct	BW	200D	400D	600D	Milk	SS	CARCASE	EMA	RIB	RUMP	IMF	Docility	Maternal	Terminal
+2.6	+0.6	+20	+37	+46	+8	+0.5	+25	+2.4	+0.5	+0.2	+0.3	+9	+\$86	+\$45

Lot. 35

KERRAH J556

DOB 07/10/20



Recommendation	Reg No.	Scrotal
TMH2	1667200556	43cm
Dilution	P/H/Sc	Docility
C	Homo Polled	1.5

GLENSIDE CRUMPY C4

S: KERRAH FIRST CHOICE F360

KERRAH AX9060

KERRAH ASPIRE A300 (ET)

D: KERRAH D256

KERRAH AX9056 (ET)

2022 AUSTRALASIAN GROUP BREEDPLAN EBVs													INDEXES	
CE Direct	BW	200D	400D	600D	Milk	SS	CARCASE	EMA	RIB	RUMP	IMF	Docility	Maternal	Terminal
+6.8	+1.1	+27	+57	+68	+12	+1.6	+41	+3.9	+0.8	+1.1	+0.1	+24	+\$124	+\$60
41%	71%	67%	69%	64%	44%	71%	56%	53%	56%	56%	47%	57%		

Traits observed: CE BWT 200WT 400WT SS FAT EMA IMF DOC

Transferable

COMMENTS: I have looked hard at this bull whether to keep. Ticks so many boxes.

PURCHASER:

PRICE:

Lot. 36

KERRAH J329

DOB 06/10/20



Recommendation	Reg No.	Scrotal
TM	1667200329	45cm
Dilution	P/H/Sc	Docility
A	Scurrs	1

KERRAH ALLROUNDER A518

S: KERRAH FORTRESS F326

KERRAH A67

POTAWA BONO

D: KERRAH E129

KERRAH A129

2022 AUSTRALASIAN GROUP BREEDPLAN EBVs													INDEXES	
CE Direct	BW	200D	400D	600D	Milk	SS	CARCASE	EMA	RIB	RUMP	IMF	Docility	Maternal	Terminal
+2.0	+2.7	+31	+57	+79	+13	+2.0	+42	+3.4	+0.7	+0.7	+0.0	+31	+\$100	+\$53
41%	71%	67%	69%	64%	41%	71%	56%	52%	56%	55%	47%	57%		

Traits observed: CE BWT 200WT 400WT SS FAT EMA IMF DOC

Transferable

COMMENTS: A real ripper, has small scurs but will throw just as many polled calves as a polled bull, never has been dehorned.. A classy bull with performance.

PURCHASER:

PRICE:

2022 AUSTRALASIAN GROUP BREEDPLAN AVERAGE EBVs													INDEXES	
CE Direct	BW	200D	400D	600D	Milk	SS	CARCASE	EMA	RIB	RUMP	IMF	Docility	Maternal	Terminal
+2.6	+0.6	+20	+37	+46	+8	+0.5	+25	+2.4	+0.5	+0.2	+0.3	+9	+\$86	+\$45

Lot. 37

KERRAH J374

DOB 19/09/20



Recommendation	Reg No.	Scrotal
TM	1667200374	45cm
Dilution	P/H/Sc	Docility
A	Homo Polled	1.5

KERRAH ALLROUNDER A518

S: KERRAH FORTRESS F326

KERRAH A67

GLENSIDE ATOMIC A5

D: KERRAH D64

KERRAH B64

2022 AUSTRALASIAN GROUP BREEDPLAN EBVs													INDEXES	
CE Direct	BW	200D	400D	600D	Milk	SS	CARCASE	EMA	RIB	RUMP	IMF	Docility	Maternal	Terminal
+0.3	+2.2	+31	+56	+75	+12	+1.6	+41	+3.9	+1.4	+1.5	+0.1	+26	+89	+49
43%	72%	68%	70%	65%	44%	72%	57%	53%	58%	57%	50%	58%		

Traits observed: CE BWT 200WT 400WT SS FAT EMA IMF DOC

Transferable

COMMENTS: Growthy bull, with super performance. Good cow family.

PURCHASER:

PRICE:

Lot. 38

KERRAH J382

DOB 14/09/20



Recommendation	Reg No.	Scrotal
TM	1667200382	40cm
Dilution	P/H/Sc	Docility
A	Homo Polled	2.5

GLENSIDE CRUMPY C4

S: KERRAH FIRST CHOICE F360

KERRAH AX9060

KERRAH WITHOUT DOUBT AW68

D: KERRAH C82

KERRAH CT6082

2022 AUSTRALASIAN GROUP BREEDPLAN EBVs													INDEXES	
CE Direct	BW	200D	400D	600D	Milk	SS	CARCASE	EMA	RIB	RUMP	IMF	Docility	Maternal	Terminal
+7.3	+1.3	+27	+57	+70	+10	+1.0	+41	+3.5	+0.3	+0.2	+0.2	-6	+120	+61
45%	72%	68%	70%	65%	47%	72%	58%	55%	59%	58%	49%	59%		

Traits observed: CE BWT 200WT 400WT SS FAT EMA IMF DOC

Non Transferable

COMMENTS: Performance with style. 50 Straws retained for within herd use.

PURCHASER:

PRICE:

2022 AUSTRALASIAN GROUP BREEDPLAN AVERAGE EBVs													INDEXES	
CE Direct	BW	200D	400D	600D	Milk	SS	CARCASE	EMA	RIB	RUMP	IMF	Docility	Maternal	Terminal
+2.6	+0.6	+20	+37	+46	+8	+0.5	+25	+2.4	+0.5	+0.2	+0.3	+9	+\$86	+\$45

Lot. 39

KERRAH J314

DOB 28/09/20



Recommendation	Reg No.	Scrotal
TMH2	1667200314	42cm
Dilution	P/H/Sc	Docility
A	Homo Polled	1

KERRAH ALLROUNDER A518

S: KERRAH FORTRESS F326

KERRAH A67

KERRAH WOW FACTOR AW60

D: KERRAH B214

KERRAH BW8014

2022 AUSTRALASIAN GROUP BREEDPLAN EBVs													INDEXES	
CE Direct	BW	200D	400D	600D	Milk	SS	CARCASE	EMA	RIB	RUMP	IMF	Docility	Maternal	Terminal
+7.7	+0.8	+23	+44	+60	+11	+0.5	+34	+3.5	+1.2	+1.3	-0.3	+30	+\$117	+\$51
45%	72%	68%	69%	65%	47%	67%	57%	52%	58%	57%	50%	59%		

Traits observed: CE BWT 200WT 400WT SS FAT EMA IMF DOC

Transferable

COMMENTS: Super maternal bull, balance, structure and docility. 50 Straws retained for within herd use only.

PURCHASER:

PRICE:

Lot. 40

KERRAH J369

DOB 21/09/20



Recommendation	Reg No.	Scrotal
TMH2H1	1667200369	37cm
Dilution	P/H/Sc	Docility
A	Homo Polled	1.5

KERRAH ALLROUNDER A518

S: KERRAH FORTRESS F326

KERRAH A67

KERRAH BANKER B464

D: KERRAH E169

KERRAH C31

2022 AUSTRALASIAN GROUP BREEDPLAN EBVs													INDEXES	
CE Direct	BW	200D	400D	600D	Milk	SS	CARCASE	EMA	RIB	RUMP	IMF	Docility	Maternal	Terminal
+11.2	-0.9	+19	+44	+55	+10	+0.9	+32	+2.9	+1.3	+1.6	+0.1	+27	+\$119	+\$52
45%	73%	69%	71%	66%	44%	73%	58%	54%	58%	58%	50%	60%		

Traits observed: CE BWT 200WT 400WT SS FAT EMA IMF DOC

Transferable

COMMENTS: Very easy calving, soft easy doing bull.

PURCHASER:

PRICE:

2022 AUSTRALASIAN GROUP BREEDPLAN AVERAGE EBVs													INDEXES	
CE Direct	BW	200D	400D	600D	Milk	SS	CARCASE	EMA	RIB	RUMP	IMF	Docility	Maternal	Terminal
+2.6	+0.6	+20	+37	+46	+8	+0.5	+25	+2.4	+0.5	+0.2	+0.3	+9	+\$86	+\$45

Lot. 41

KERRAH J559

DOB 05/10/20



Recommendation	Reg No.	Scrotal
TM	1667200559	46cm
Dilution	P/H/Sc	Docility
A	Polled	1.5

KERRAH CHOCO BLOCK C351

S: KERRAH ELEMENTAL E482

KERRAH C82

POTAWA BONO

D: KERRAH E59

KERRAH Z59

2022 AUSTRALASIAN GROUP BREEDPLAN EBVs													INDEXES	
CE Direct	BW	200D	400D	600D	Milk	SS	CARCASE	EMA	RIB	RUMP	IMF	Docility	Maternal	Terminal
-0.9	+1.8	+28	+56	+76	+11	+3.2	+44	+4.2	-0.2	-0.1	+0.1	+21	+87	+51
43%	71%	66%	68%	64%	43%	70%	55%	51%	55%	54%	46%	55%		

Traits observed: CE BWT 200WT 400WT SS FAT EMA IMF DOC

Transferable

COMMENTS: Top performance and docile.

PURCHASER:

PRICE:

Lot. 42

KERRAH J526

DOB 11/09/20



Recommendation	Reg No.	Scrotal
TMH2H1	1667200526	41cm
Dilution	P/H/Sc	Docility
A	Polled	2

WAIKITE ZACKARIAS AZ0176

S: KERRAH D821

KERRAH B221

KERRAH ENDURANCE E353

D: KERRAH G26

KERRAH E62

2022 AUSTRALASIAN GROUP BREEDPLAN EBVs													INDEXES	
CE Direct	BW	200D	400D	600D	Milk	SS	CARCASE	EMA	RIB	RUMP	IMF	Docility	Maternal	Terminal
+11.1	-1.0	+18	+43	+49	+11	+1.8	+32	+3.3	+1.0	+1.2	+0.8	-3	+123	+51
38%	69%	64%	66%	62%	40%	69%	53%	49%	52%	52%	44%	50%		

Traits observed: GL CE BWT 200WT 400WT SS FAT EMA IMF DOC

Transferable

COMMENTS: A real easy calver with good constitution. Good maternal or heifer bull.

PURCHASER:

PRICE:

2022 AUSTRALASIAN GROUP BREEDPLAN AVERAGE EBVs													INDEXES	
CE Direct	BW	200D	400D	600D	Milk	SS	CARCASE	EMA	RIB	RUMP	IMF	Docility	Maternal	Terminal
+2.6	+0.6	+20	+37	+46	+8	+0.5	+25	+2.4	+0.5	+0.2	+0.3	+9	+\$86	+\$45

Lot. 43

KERRAH J404 (ET)

DOB 17/09/20



Recommendation	Reg No.	Scrotal
TMH2	1667200404	42cm
Dilution	P/H/Sc	Docility
A	Polled	1.5

KERRAH ALLROUNDER A518

S: KERRAH FORTRESS F326

KERRAH A67

MARCHANT IMPECABLE AJ923

D: KERRAH AU7064

RISSINGTON AM264

2022 AUSTRALASIAN GROUP BREEDPLAN EBVs													INDEXES	
CE Direct	BW	200D	400D	600D	Milk	SS	CARCASE	EMA	RIB	RUMP	IMF	Docility	Maternal	Terminal
+5.8	+1.0	+27	+53	+72	+13	+1.0	+45	+3.5	+0.0	-0.3	-0.3	+12	+\$120	+\$56
46%	69%	65%	65%	63%	50%	60%	55%	48%	55%	54%	46%	62%		

Traits observed: BWT 200WT 400WT SS FAT EMA IMF DOC

Transferable

COMMENTS: ET calf out top old cow.

PURCHASER:

PRICE:

Lot. 44

KERRAH J504

DOB 09/09/20



Recommendation	Reg No.	Scrotal
TMH2	1667200504	43cm
Dilution	P/H/Sc	Docility
A	Polled	2

GLENSIDE CRUMPY C4

S: KERRAH FIRST CHOICE F360

KERRAH AX9060

KERRAH CHOCO BLOCK C351

D: KERRAH G604

KERRAH Z104

2022 AUSTRALASIAN GROUP BREEDPLAN EBVs													INDEXES	
CE Direct	BW	200D	400D	600D	Milk	SS	CARCASE	EMA	RIB	RUMP	IMF	Docility	Maternal	Terminal
+4.5	+1.7	+27	+59	+70	+9	+0.9	+41	+4.2	+1.0	+1.3	+0.1	+29	+\$113	+\$59
42%	70%	66%	68%	62%	41%	71%	55%	52%	56%	55%	47%	55%		

Traits observed: GL CE BWT 200WT 400WT SS FAT EMA IMF DOC

Non Transferable

COMMENTS: Another son of First Choice with top performance.

PURCHASER:

PRICE:

2022 AUSTRALASIAN GROUP BREEDPLAN AVERAGE EBVs													INDEXES	
CE Direct	BW	200D	400D	600D	Milk	SS	CARCASE	EMA	RIB	RUMP	IMF	Docility	Maternal	Terminal
+2.6	+0.6	+20	+37	+46	+8	+0.5	+25	+2.4	+0.5	+0.2	+0.3	+9	+\$86	+\$45

Lot. 45

KERRAH J335

DOB 15/10/20



Recommendation	Reg No.	Scrotal
TMH2	1667200335	46cm
Dilution	P/H/Sc	Docility
A	Polled	2

GLENSIDE CRUMPY C4

S: KERRAH FIRST CHOICE F360

KERRAH AX9060

KERRAH WITHOUT DOUBT AW68

D: KERRAH B21

KERRAH AW8020

2022 AUSTRALASIAN GROUP BREEDPLAN EBVs													INDEXES	
CE Direct	BW	200D	400D	600D	Milk	SS	CARCASE	EMA	RIB	RUMP	IMF	Docility	Maternal	Terminal
+8.9	+0.6	+28	+60	+77	+13	+2.5	+45	+3.9	-0.3	-0.4	+0.4	+7	+\$129	+\$66
45%	72%	68%	70%	65%	48%	73%	58%	54%	58%	57%	50%	59%		

Traits observed: CE BWT 200WT 400WT SS FAT EMA IMF DOC

Non Transferable

COMMENTS: Real curve bender from very good cow.

PURCHASER:

PRICE:

Lot. 46

KERRAH J392

DOB 19/09/20



Recommendation	Reg No.	Scrotal
T	1667200392	44cm
Dilution	P/H/Sc	Docility
A	Polled	2

KERRAH BEYOND DOUBT B389

S: KERRAH GO TO G724

KERRAH C224

KERRAH TOTARA AT63

D: KERRAH A92

KERRAH AT6092

2022 AUSTRALASIAN GROUP BREEDPLAN EBVs													INDEXES	
CE Direct	BW	200D	400D	600D	Milk	SS	CARCASE	EMA	RIB	RUMP	IMF	Docility	Maternal	Terminal
+2.7	+1.7	+29	+50	+60	+9	+1.8	+35	+3.5	+0.1	-0.1	-0.2	+10	+\$97	+\$51
42%	73%	67%	69%	63%	45%	71%	56%	52%	56%	56%	46%	57%		

Traits observed: GL CE BWT 200WT 400WT SS FAT EMA IMF DOC

Non Transferable

COMMENTS: Good length and bone.

PURCHASER:

2022 AUSTRALASIAN GROUP BREEDPLAN AVERAGE EBVs													INDEXES	
CE Direct	BW	200D	400D	600D	Milk	SS	CARCASE	EMA	RIB	RUMP	IMF	Docility	Maternal	Terminal
+2.6	+0.6	+20	+37	+46	+8	+0.5	+25	+2.4	+0.5	+0.2	+0.3	+9	+\$86	+\$45

Lot. 47

KERRAH J431

DOB 10/09/20



Recommendation	Reg No.	Scrotal
TH2	1667200431	40cm
Dilution	P/H/Sc	Docility
A	Homo Polled	1.5

KERRAH DESTINED D608

S: KERRAH GOLDCOAST G722

KERRAH B221

KERRAH ALLROUNDER A518

D: KERRAH C31

KERRAH A31

2022 AUSTRALASIAN GROUP BREEDPLAN EBVs													INDEXES	
CE Direct	BW	200D	400D	600D	Milk	SS	CARCASE	EMA	RIB	RUMP	IMF	Docility	Maternal	Terminal
+7.6	+0.3	+23	+40	+49	+13	+0.4	+27	+3.0	+1.3	+1.5	+0.2	+6	+\$102	+\$45
39%	70%	62%	63%	59%	42%	65%	50%	47%	50%	49%	39%	51%		

Traits observed: BWT 200WT 400WT SS FAT EMA IMF DOC

Non Transferable

COMMENTS: Reared a twin, ticks a lot of boxes.

PURCHASER:

PRICE:

Lot. 48

KERRAH J434

DOB 17/09/20



Recommendation	Reg No.	Scrotal
TM	1667200434	42cm
Dilution	P/H/Sc	Docility
N	Polled	1.5

GLENSIDE CRUMPY C4

S: KERRAH FUNDAMENTAL F509

KERRAH A9

KERRAH XCELL AX13

D: KERRAH D154

KERRAH DW8154

2022 AUSTRALASIAN GROUP BREEDPLAN EBVs													INDEXES	
CE Direct	BW	200D	400D	600D	Milk	SS	CARCASE	EMA	RIB	RUMP	IMF	Docility	Maternal	Terminal
-1.5	+2.3	+31	+63	+77	+10	+0.9	+44	+4.7	+1.3	+1.2	+0.4	+12	+\$86	+\$52
40%	70%	65%	67%	62%	44%	70%	54%	51%	55%	54%	46%	53%		

Traits observed: CE BWT 200WT 400WT SS FAT EMA IMF DOC

Non Transferable

COMMENTS: One of the best performers in the catalogue ever since a calf. Outstanding performance.

PURCHASER:

PRICE:

2022 AUSTRALASIAN GROUP BREEDPLAN AVERAGE EBVs													INDEXES	
CE Direct	BW	200D	400D	600D	Milk	SS	CARCASE	EMA	RIB	RUMP	IMF	Docility	Maternal	Terminal
+2.6	+0.6	+20	+37	+46	+8	+0.5	+25	+2.4	+0.5	+0.2	+0.3	+9	+\$86	+\$45

Lot. 49

KERRAH J508

DOB 17/09/20



Recommendation	Reg No.	Scrotal
TMH2	1667200508	41cm
Dilution	P/H/Sc	Docility
N	Homo Polled	2

HOOKS YELLOWSTONE 97Y (IMP USA)

S: RISSINGTON EXCEED AE203

RISSINGTON AZ232

KERRAH XCELL AX13

D: KERRAH E208

KERRAH A108

2022 AUSTRALASIAN GROUP BREEDPLAN EBVs													INDEXES	
CE Direct	BW	200D	400D	600D	Milk	SS	CARCASE	EMA	RIB	RUMP	IMF	Docility	Maternal	Terminal
+8.8	-1.0	+26	+52	+58	+13	+1.3	+35	+4.5	+0.9	+0.3	+1.0	+3	+\$112	+\$54
42%	71%	65%	65%	63%	40%	66%	54%	48%	52%	51%	44%	54%		

Traits observed: GL CE BWT 200WT 400WT SS FAT EMA IMF DOC
Transferable

COMMENTS: A different pedigree, early maturing with good carcass traits.

PURCHASER:

PRICE:

Lot. 50

KERRAH J488 (ET)

DOB 08/09/20



Recommendation	Reg No.	Scrotal
TMH2	1667200488	41cm
Dilution	P/H/Sc	Docility
C	Homo Polled	1

RISSINGTON NEW STANDARD AU158

S: GLENSIDE CRUMPY C4

GLENSIDE AW820

KERRAH WITHOUT DOUBT AW68

D: KERRAH B188

KERRAH CW8188

2022 AUSTRALASIAN GROUP BREEDPLAN EBVs													INDEXES	
CE Direct	BW	200D	400D	600D	Milk	SS	CARCASE	EMA	RIB	RUMP	IMF	Docility	Maternal	Terminal
+7.4	+0.1	+21	+48	+60	+12	+1.0	+35	+4.0	+0.7	+0.7	+0.3	+33	+\$120	+\$55
51%	69%	66%	65%	64%	55%	60%	57%	50%	57%	56%	51%	63%		

Traits observed: BWT 200WT 400WT SS FAT EMA IMF DOC
Transferable

COMMENTS: ET calf, moderate, easy doing, homo polled and docile.

PURCHASER:

PRICE:

2022 AUSTRALASIAN GROUP BREEDPLAN AVERAGE EBVs													INDEXES	
CE Direct	BW	200D	400D	600D	Milk	SS	CARCASE	EMA	RIB	RUMP	IMF	Docility	Maternal	Terminal
+2.6	+0.6	+20	+37	+46	+8	+0.5	+25	+2.4	+0.5	+0.2	+0.3	+9	+\$86	+\$45

Lot. 51

KERRAH J483

DOB 14/09/20



Recommendation	Reg No.	Scrotal
TMH2H1	1667200483	41cm
Dilution	P/H/Sc	Docility
C	Homo Polled	2

RISSINGTON NEW STANDARD AU158

S: GLENSIDE CRUMPY C4

GLENSIDE AW820

KERRAH EFFICIENT E500

D: KERRAH G83

KERRAH E83

2022 AUSTRALASIAN GROUP BREEDPLAN EBVs													INDEXES	
CE Direct	BW	200D	400D	600D	Milk	SS	CARCASE	EMA	RIB	RUMP	IMF	Docility	Maternal	Terminal
+10.4	-1.0	+20	+47	+53	+12	+1.5	+33	+3.2	+0.9	+1.1	+0.4	+6	+\$121	+\$55
49%	72%	67%	70%	66%	48%	72%	58%	55%	59%	58%	51%	57%		

Traits observed: GL CE BWT 200WT 400WT SS FAT EMA IMF DOC

Transferable

COMMENTS: Easy calving moderate Crumpy son, good maternal bull.

PURCHASER:

PRICE:

Lot. 52

KERRAH J500

DOB 28/08/20



Recommendation	Reg No.	Scrotal
TMH2H1	1667200500	41cm
Dilution	P/H/Sc	Docility
C	Homo Polled	2

WAIKITE ZACKARIAS AZ0176

S: KERRAH D821

KERRAH B221

GLENSIDE CRUMPY C4

D: KERRAH G700

KERRAH D99

2022 AUSTRALASIAN GROUP BREEDPLAN EBVs													INDEXES	
CE Direct	BW	200D	400D	600D	Milk	SS	CARCASE	EMA	RIB	RUMP	IMF	Docility	Maternal	Terminal
+14.4	-1.7	+18	+40	+44	+11	+0.1	+31	+3.7	+0.7	+0.7	+0.5	+4	+\$124	+\$55
41%	61%	61%	65%	60%	42%	71%	54%	51%	53%	52%	45%	51%		

Traits observed: GL 200WT 400WT SS FAT EMA IMF DOC

Transferable

COMMENTS: Super ease of calving and super low gestation. Great dairy or heifer bull.

PURCHASER:

PRICE:

2022 AUSTRALASIAN GROUP BREEDPLAN AVERAGE EBVs													INDEXES	
CE Direct	BW	200D	400D	600D	Milk	SS	CARCASE	EMA	RIB	RUMP	IMF	Docility	Maternal	Terminal
+2.6	+0.6	+20	+37	+46	+8	+0.5	+25	+2.4	+0.5	+0.2	+0.3	+9	+\$86	+\$45

Lot. 53

KERRAH J539

DOB 06/09/20



Recommendation	Reg No.	Scrotal
TMH2H1	1667200539	39cm
Dilution	P/H/Sc	Docility
C	Polled	1.5

RISSINGTON NEW STANDARD AU158

S: GLENSIDE CRUMPY C4

GLENSIDE AW820

KERRAH DAZZLER D817

D: KERRAH G39

KERRAH CY240

2022 AUSTRALASIAN GROUP BREEDPLAN EBVs													INDEXES	
CE Direct	BW	200D	400D	600D	Milk	SS	CARCASE	EMA	RIB	RUMP	IMF	Docility	Maternal	Terminal
+9.1	-0.8	+22	+48	+56	+12	+0.3	+38	+4.0	+1.6	+1.8	+0.8	+21	+\$129	+\$53
49%	72%	68%	70%	66%	50%	73%	59%	55%	59%	58%	52%	58%		

Traits observed: GL CE BWT 200WT 400WT SS FAT EMA IMF DOC
Transferable

COMMENTS: Moderate and maternal, from outstanding young cow.

PURCHASER:

PRICE:

Lot. 54

KERRAH J554

DOB 11/09/20



Recommendation	Reg No.	Scrotal
TMH2H1	1667200554	41cm
Dilution	P/H/Sc	Docility
N	Polled	2

KERRAH XFACTOR AX187 (ET)

S: KERRAH EFFICIENT E500

KERRAH C156

KERRAH DAZZLER D817

D: KERRAH G154

KERRAH D154

2022 AUSTRALASIAN GROUP BREEDPLAN EBVs													INDEXES	
CE Direct	BW	200D	400D	600D	Milk	SS	CARCASE	EMA	RIB	RUMP	IMF	Docility	Maternal	Terminal
+12.8	-1.2	+21	+47	+56	+11	+0.8	+41	+4.4	+0.5	+0.3	+0.0	+6	+\$132	+\$61
45%	71%	67%	69%	65%	41%	72%	56%	52%	56%	55%	48%	56%		

Traits observed: CE BWT 200WT 400WT SS FAT EMA IMF DOC
Transferable

COMMENTS: Another superb, easy calving bull.

PURCHASER:

PRICE:

2022 AUSTRALASIAN GROUP BREEDPLAN AVERAGE EBVs													INDEXES	
CE Direct	BW	200D	400D	600D	Milk	SS	CARCASE	EMA	RIB	RUMP	IMF	Docility	Maternal	Terminal
+2.6	+0.6	+20	+37	+46	+8	+0.5	+25	+2.4	+0.5	+0.2	+0.3	+9	+\$86	+\$45

Lot. 55

KERRAH J449 (ET)

DOB 07/09/20



Recommendation	Reg No.	Scrotal
TMH2	1667200349	42cm
Dilution	P/H/Sc	Docility
N	Polled	1.5

WAIKITE ZACKARIAS AZ0176

S: KERRAH D821

KERRAH B221

RISSINGTON POLLED KINGDOM AK267

D: KERRAH AW8149

KERRAH AILSA AT6149

2022 AUSTRALASIAN GROUP BREEDPLAN EBVs													INDEXES	
CE Direct	BW	200D	400D	600D	Milk	SS	CARCASE	EMA	RIB	RUMP	IMF	Docility	Maternal	Terminal
+13.1	-1.2	+17	+44	+50	+8	+1.2	+34	+2.7	+0.2	+0.1	+0.4	+5	+\$124	+\$53
46%	67%	64%	62%	61%	51%	57%	53%	46%	52%	51%	44%	58%		

Traits observed: BWT 200WT 400WT SS FAT EMA IMF DOC

Transferable

COMMENTS: Another very good ET calf from a good old cow. I would suspect higher birth and higher growth than EBVS would suggest.

PURCHASER:

PRICE:

Lot. 56

KERRAH J471

DOB 15/09/20



Recommendation	Reg No.	Scrotal
TMH2H1	1667200471	39cm
Dilution	P/H/Sc	Docility
N	Polled	2

KERRAH BIG BOY B449

S: KERRAH FAT BOY F323

KERRAH A223

KERRAH ELEMENTAL E482

D: KERRAH G171

KERRAH E171

2022 AUSTRALASIAN GROUP BREEDPLAN EBVs													INDEXES	
CE Direct	BW	200D	400D	600D	Milk	SS	CARCASE	EMA	RIB	RUMP	IMF	Docility	Maternal	Terminal
+10.8	-0.5	+19	+48	+49	+8	+0.6	+37	+3.4	+0.3	+0.2	+0.7	+14	+\$128	+\$56
39%	70%	66%	68%	63%	38%	71%	55%	51%	55%	54%	46%	54%		

Traits observed: CE BWT 200WT 400WT SS FAT EMA IMF DOC

Non Transferable

COMMENTS: Good curve bender shows good muscle.

PURCHASER:

PRICE:

2022 AUSTRALASIAN GROUP BREEDPLAN AVERAGE EBVs													INDEXES	
CE Direct	BW	200D	400D	600D	Milk	SS	CARCASE	EMA	RIB	RUMP	IMF	Docility	Maternal	Terminal
+2.6	+0.6	+20	+37	+46	+8	+0.5	+25	+2.4	+0.5	+0.2	+0.3	+9	+\$86	+\$45

Lot. 57

KERRAH J517

DOB 10/09/20



Recommendation	Reg No.	Scrotal
TMH2	1667200517	42cm
Dilution	P/H/Sc	Docility
N	Polled	1.5

RISSINGTON NEW STANDARD AU158

S: GLENSIDE CRUMPY C4

GLENSIDE AW820

KERRAH EMPEROR E440

D: KERRAH G217

KERRAH D217

2022 AUSTRALASIAN GROUP BREEDPLAN EBVs													INDEXES	
CE Direct	BW	200D	400D	600D	Milk	SS	CARCASE	EMA	RIB	RUMP	IMF	Docility	Maternal	Terminal
+6.5	+1.1	+28	+60	+76	+11	+1.4	+46	+4.8	-0.3	-0.6	-0.3	+27	+\$118	+\$66
47%	71%	67%	69%	65%	49%	72%	58%	54%	58%	58%	51%	57%		

Traits observed: GL CE BWT 200WT 400WT SS FAT EMA IMF DOC

Non Transferable

COMMENTS: Muscular, early maturing bull.

PURCHASER:

PRICE:

Lot. 58

KERRAH J519

DOB 07/09/20



Recommendation	Reg No.	Scrotal
TMH2	1667200519	36cm
Dilution	P/H/Sc	Docility
N	Polled	1.5

RISSINGTON NEW STANDARD AU158

S: GLENSIDE CRUMPY C4

GLENSIDE AW820

KERRAH EXCLUSIVE E545

D: KERRAH G219

KERRAH E219

2022 AUSTRALASIAN GROUP BREEDPLAN EBVs													INDEXES	
CE Direct	BW	200D	400D	600D	Milk	SS	CARCASE	EMA	RIB	RUMP	IMF	Docility	Maternal	Terminal
+8.5	+0.3	+26	+57	+67	+13	+0.0	+41	+3.2	+0.0	-0.2	+0.2	+12	+\$131	+\$62
49%	72%	68%	70%	66%	49%	72%	58%	55%	59%	58%	52%	57%		

Traits observed: GL CE BWT 200WT 400WT SS FAT EMA IMF DOC

Non Transferable

COMMENTS: Good pedigree and performance very high libido.

PURCHASER:

PRICE:

2022 AUSTRALASIAN GROUP BREEDPLAN AVERAGE EBVs													INDEXES	
CE Direct	BW	200D	400D	600D	Milk	SS	CARCASE	EMA	RIB	RUMP	IMF	Docility	Maternal	Terminal
+2.6	+0.6	+20	+37	+46	+8	+0.5	+25	+2.4	+0.5	+0.2	+0.3	+9	+\$86	+\$45

Lot. 59

KERRAH J463

DOB 23/09/20



Recommendation	Reg No.	Scrotal
TM	1667200463	37cm
Dilution	P/H/Sc	Docility
C	Polled	1

GLENSIDE CRUMPY C4

S: KERRAH GRUMPY G800

KERRAH E100

KERRAH EMPEROR E440

D: KERRAH G64

KERRAH D64

2022 AUSTRALASIAN GROUP BREEDPLAN EBVs													INDEXES	
CE Direct	BW	200D	400D	600D	Milk	SS	CARCASE	EMA	RIB	RUMP	IMF	Docility	Maternal	Terminal
-0.2	+3.0	+30	+57	+69	+11	-0.3	+38	+3.4	+0.9	+0.9	-0.3	+40	+\$87	+\$49
39%	68%	63%	66%	60%	37%	69%	53%	49%	53%	52%	45%	51%		

Traits observed: CE BWT 200WT 400WT SS FAT EMA IMF DOC

Transferable

COMMENTS: Very docile and easy doing very good pedigree.

PURCHASER:

PRICE:

Lot. 60

KERRAH J391

DOB 11/09/20



Recommendation	Reg No.	Scrotal
T	1667200391	39cm
Dilution	P/H/Sc	Docility
C	Homo Polled	2

BLACKBRIDGE Z5

S: POTAWA BONO

POTAWA ZAMBEZI

KERRAH CHOCO BLOCK C351

D: KERRAH G691

KERRAH AY91 (ET)

2022 AUSTRALASIAN GROUP BREEDPLAN EBVs													INDEXES	
CE Direct	BW	200D	400D	600D	Milk	SS	CARCASE	EMA	RIB	RUMP	IMF	Docility	Maternal	Terminal
+2.8	+1.4	+26	+47	+60	+15	+0.6	+34	+3.6	+0.1	+0.1	+0.3	+9	+\$99	+\$47
44%	70%	65%	68%	64%	50%	71%	56%	52%	56%	55%	47%	55%		

Traits observed: GL CE BWT 200WT 400WT SS FAT EMA IMF DOC

Non Transferable

COMMENTS: Good length and cosmetics.

PURCHASER:

PRICE:

2022 AUSTRALASIAN GROUP BREEDPLAN AVERAGE EBVs													INDEXES	
CE Direct	BW	200D	400D	600D	Milk	SS	CARCASE	EMA	RIB	RUMP	IMF	Docility	Maternal	Terminal
+2.6	+0.6	+20	+37	+46	+8	+0.5	+25	+2.4	+0.5	+0.2	+0.3	+9	+\$86	+\$45

Lot. 61

KERRAH J546

DOB 30/09/20



Recommendation	Reg No.	Scrotal
TMH2H1	1667200655	41cm
Dilution	P/H/Sc	Docility
N	Homo Polled	2

KERRAH XFACTOR AX187 (ET)

S: KERRAH EFFICIENT E500

KERRAH C156

KERRAH DAZZLER D817

D: KERRAH G188

KERRAH D188

2022 AUSTRALASIAN GROUP BREEDPLAN EBVs													INDEXES	
CE Direct	BW	200D	400D	600D	Milk	SS	CARCASE	EMA	RIB	RUMP	IMF	Docility	Maternal	Terminal
+12.3	-1.5	+18	+43	+49	+9	+1.1	+35	+4.0	+0.8	+0.9	+0.5	--	+\$128	+\$55
44%	61%	60%	63%	61%	39%	65%	53%	48%	54%	53%	46%			

Traits observed: CE 400WT SS FAT EMA IMF

Transferable

COMMENTS: Easy calving moderate bull with good pedigree Has been re tagged 655.

PURCHASER:

PRICE:

Lot. 62

KERRAH J536

DOB 04/10/20



Recommendation	Reg No.	Scrotal
TH2H1	1667200536	39cm
Dilution	P/H/Sc	Docility
N	Homo Polled	2

KERRAH XFACTOR AX187 (ET)

S: KERRAH EFFICIENT E500

KERRAH C156

KERRAH DECKHAND D619

D: KERRAH G36

KERRAH D36

2022 AUSTRALASIAN GROUP BREEDPLAN EBVs													INDEXES	
CE Direct	BW	200D	400D	600D	Milk	SS	CARCASE	EMA	RIB	RUMP	IMF	Docility	Maternal	Terminal
+12.2	-0.7	+18	+42	+48	+10	+0.3	+32	+3.6	+0.7	+0.7	-0.2	+3	+\$123	+\$55
44%	71%	66%	69%	65%	40%	71%	56%	52%	56%	55%	47%	55%		

Traits observed: CE BWT 200WT 400WT SS FAT EMA IMF DOC

Non Transferable

COMMENTS: Easy calving bull suitable for heifers.

PURCHASER:

PRICE:

2022 AUSTRALASIAN GROUP BREEDPLAN AVERAGE EBVs													INDEXES	
CE Direct	BW	200D	400D	600D	Milk	SS	CARCASE	EMA	RIB	RUMP	IMF	Docility	Maternal	Terminal
+2.6	+0.6	+20	+37	+46	+8	+0.5	+25	+2.4	+0.5	+0.2	+0.3	+9	+\$86	+\$45

Lot. 63

KERRAH J548

DOB 27/09/20



Recommendation	Reg No.	Scrotal
TMH2H1	1667200548	39cm
Dilution	P/H/Sc	Docility
N	Polled	1.5

KERRAH XFACTOR AX187 (ET)

S: KERRAH EFFICIENT E500

KERRAH C156

KERRAH DAPPER D662

D: KERRAH G249

KERRAH AY249

2022 AUSTRALASIAN GROUP BREEDPLAN EBVs													INDEXES	
CE Direct	BW	200D	400D	600D	Milk	SS	CARCASE	EMA	RIB	RUMP	IMF	Docility	Maternal	Terminal
+13.8	-1.0	+18	+33	+42	+11	+0.6	+25	+3.0	+1.4	+1.7	+0.0	+21	+\$118	+\$49
46%	72%	67%	70%	65%	43%	72%	57%	53%	57%	56%	48%	56%		

Traits observed: CE BWT 200WT 400WT SS FAT EMA IMF DOC

Transferable

COMMENTS: Great structure and very quiet.

PURCHASER:

PRICE:

Lot. 64

KERRAH J540

DOB 06/09/20



Recommendation	Reg No.	Scrotal
TMH2H1	1667200540	40cm
Dilution	P/H/Sc	Docility
N	Polled	1.5

HOOKS SHEAR FORCE 38K

S: HOOKS BEACON 56B (IMP USA)

HOOKS ZAFIRAH 41Z

ASR AUGUSTUS Z2165 (IMP USA)

D: KERRAH E140

KERRAH C140

2022 AUSTRALASIAN GROUP BREEDPLAN EBVs													INDEXES	
CE Direct	BW	200D	400D	600D	Milk	SS	CARCASE	EMA	RIB	RUMP	IMF	Docility	Maternal	Terminal
+12.7	-2.5	+25	+38	+46	+7	+0.2	+31	+6.5	+1.1	-0.2	+1.1	+12	+\$106	+\$49
46%	73%	67%	69%	65%	52%	69%	58%	54%	58%	56%	51%	55%		

Traits observed: GL CE BWT 200WT 400WT SS FAT EMA IMF DOC

Transferable

COMMENTS: Thick, solid, with great carcass quality, very quiet. Good cow family.

PURCHASER:

PRICE:

2022 AUSTRALASIAN GROUP BREEDPLAN AVERAGE EBVs													INDEXES	
CE Direct	BW	200D	400D	600D	Milk	SS	CARCASE	EMA	RIB	RUMP	IMF	Docility	Maternal	Terminal
+2.6	+0.6	+20	+37	+46	+8	+0.5	+25	+2.4	+0.5	+0.2	+0.3	+9	+\$86	+\$45

Lot. 65

KERRAH J472

DOB 10/09/20



Recommendation	Reg No.	Scrotal
TMH2H1	1667200472	39cm
Dilution	P/H/Sc	Docility
N	Homo Polled	2

HOOKS YELLOWSTONE 97Y (IMP USA)

S: RISSINGTON EXCEED AE203

RISSINGTON AZ232

KERRAH XCELL AX13

D: KERRAH Z172

KERRAH X L375

2022 AUSTRALASIAN GROUP BREEDPLAN EBVs													INDEXES	
CE Direct	BW	200D	400D	600D	Milk	SS	CARCASE	EMA	RIB	RUMP	IMF	Docility	Maternal	Terminal
+12.8	-3.4	+14	+36	+36	+11	+0.7	+23	+4.2	+1.2	+0.8	+1.2	-3	+\$106	+\$46
43%	72%	67%	68%	65%	45%	71%	56%	51%	56%	55%	46%	57%		

Traits observed: GL CE BWT 200WT 400WT SS FAT EMA IMF DOC

Non Transferable

COMMENTS: Super safe heifer bull.

PURCHASER:

PRICE:

Lot. 66

KERRAH J417

DOB 09/09/20



Recommendation	Reg No.	Scrotal
T	1667200417	42cm
Dilution	P/H/Sc	Docility
C	Polled	2

KERRAH ALLROUNDER A518

S: KERRAH FOREMAN F349

KERRAH AW8049

FALCON HILL TRACTOR AT638

D: KERRAH AY117

KERRAH AW8203

2022 AUSTRALASIAN GROUP BREEDPLAN EBVs													INDEXES	
CE Direct	BW	200D	400D	600D	Milk	SS	CARCASE	EMA	RIB	RUMP	IMF	Docility	Maternal	Terminal
+0.3	+3.0	+29	+47	+64	+10	+0.9	+32	+3.2	+0.8	+0.9	-0.1	+6	+\$71	+\$43
41%	69%	60%	59%	57%	46%	53%	48%	42%	48%	47%	37%	56%		

Traits observed: BWT 200WT 400WT SS FAT EMA IMF DOC

Transferable

COMMENTS: Born a twin. Big powerful sire with great bone and outlook.

PURCHASER:

PRICE:

2022 AUSTRALASIAN GROUP BREEDPLAN AVERAGE EBVs													INDEXES	
CE Direct	BW	200D	400D	600D	Milk	SS	CARCASE	EMA	RIB	RUMP	IMF	Docility	Maternal	Terminal
+2.6	+0.6	+20	+37	+46	+8	+0.5	+25	+2.4	+0.5	+0.2	+0.3	+9	+\$86	+\$45

Lot. 67

KERRAH J362

DOB 25/09/20



Recommendation	Reg No.	Scrotal
TM	1667200362	41cm
Dilution	P/H/Sc	Docility
C	Polled	2.5

RUAVIEW PINETREE AC6

S: GLENSIDE FRONTIER F19

GLENSIDE A207

KERRAH XFACTOR AX187 (ET)

D: KERRAH Z162

KERRAH AX9162 (ET)

2022 AUSTRALASIAN GROUP BREEDPLAN EBVs													INDEXES	
CE Direct	BW	200D	400D	600D	Milk	SS	CARCASE	EMA	RIB	RUMP	IMF	Docility	Maternal	Terminal
+7.4	+1.0	+25	+49	+61	+11	+1.5	+35	+3.3	+1.2	+1.7	+0.1	+10	+\$110	+\$54
46%	73%	68%	70%	64%	49%	72%	57%	53%	58%	57%	49%	59%		

Traits observed: CE BWT 200WT 400WT SS FAT EMA IMF DOC

Non Transferable

COMMENTS: Quality bull from well performed old cow.

PURCHASER:

PRICE:

Lot. 68

KERRAH J503

DOB 26/09/20



Recommendation	Reg No.	Scrotal
TM	1667200503	44cm
Dilution	P/H/Sc	Docility
C	Homo Polled	2.5

RUAVIEW PINETREE AC6

S: GLENSIDE FRONTIER F19

GLENSIDE A207

KERRAH WITHOUT DOUBT AW68

D: KERRAH Z3

KERRAH AT6003

2022 AUSTRALASIAN GROUP BREEDPLAN EBVs													INDEXES	
CE Direct	BW	200D	400D	600D	Milk	SS	CARCASE	EMA	RIB	RUMP	IMF	Docility	Maternal	Terminal
+4.5	+1.4	+26	+61	+75	+11	+2.2	+45	+4.6	+1.0	+1.3	+0.3	-1	+\$121	+\$62
45%	72%	68%	70%	64%	47%	72%	57%	53%	57%	57%	49%	59%		

Traits observed: CE BWT 200WT 400WT SS FAT EMA IMF DOC

Non Transferable

COMMENTS: Thick meaty sire with top end performance.

PURCHASER:

PRICE:

2022 AUSTRALASIAN GROUP BREEDPLAN AVERAGE EBVs													INDEXES	
CE Direct	BW	200D	400D	600D	Milk	SS	CARCASE	EMA	RIB	RUMP	IMF	Docility	Maternal	Terminal
+2.6	+0.6	+20	+37	+46	+8	+0.5	+25	+2.4	+0.5	+0.2	+0.3	+9	+\$86	+\$45

Lot. 69

KERRAH J444

DOB 19/09/20



Recommendation	Reg No.	Scrotal
TMH2	1667200444	41cm
Dilution	P/H/Sc	Docility
C	Polled	2

KERRAH BIG BOY B449

S: KERRAH FLAMBOYANT F403

KERRAH Z3

GLENSIDE CRUMPY C4

D: KERRAH F144

KERRAH C242

2022 AUSTRALASIAN GROUP BREEDPLAN EBVs													INDEXES	
CE Direct	BW	200D	400D	600D	Milk	SS	CARCASE	EMA	RIB	RUMP	IMF	Docility	Maternal	Terminal
+4.7	+1.3	+26	+59	+72	+7	+2.3	+45	+4.3	-0.7	-1.1	-0.2	+2	+\$119	+\$63
42%	71%	67%	68%	64%	42%	68%	56%	51%	56%	55%	48%	57%		

Traits observed: CE BWT 200WT 400WT SS FAT EMA IMF DOC

Non Transferable

COMMENTS: Top 10% growth carcass and still in top 35% for calving ease.

PURCHASER:

PRICE:

Lot. 70

KERRAH J530

DOB 27/09/20



Recommendation	Reg No.	Scrotal
T	1667200530	38cm
Dilution	P/H/Sc	Docility
N	Polled	2

KERRAH BIG BOY B449

S: KERRAH FLAMBOYANT F403

KERRAH Z3

KERRAH AWESOME A404

D: KERRAH E230

KERRAH A130

2022 AUSTRALASIAN GROUP BREEDPLAN EBVs													INDEXES	
CE Direct	BW	200D	400D	600D	Milk	SS	CARCASE	EMA	RIB	RUMP	IMF	Docility	Maternal	Terminal
+2.6	+2.5	+29	+63	+78	+8	+0.7	+50	+5.5	+0.8	+0.7	-0.2	-14	+\$125	+\$63
42%	72%	67%	70%	65%	44%	71%	57%	53%	57%	57%	49%	58%		

Traits observed: CE BWT 200WT 400WT SS FAT EMA IMF DOC

Non Transferable

COMMENTS: Super performance deep in the catalogue.

PURCHASER:

PRICE:

2022 AUSTRALASIAN GROUP BREEDPLAN AVERAGE EBVs													INDEXES	
CE Direct	BW	200D	400D	600D	Milk	SS	CARCASE	EMA	RIB	RUMP	IMF	Docility	Maternal	Terminal
+2.6	+0.6	+20	+37	+46	+8	+0.5	+25	+2.4	+0.5	+0.2	+0.3	+9	+\$86	+\$45

Lot. 71

KERRAH J339

DOB 13/09/20



Recommendation	Reg No.	Scrotal
TMH2H1	1667200339	42cm
Dilution	P/H/Sc	Docility
N	Scurrs	1.5

KERRAH BIG BOY B449

S: KERRAH FAT BOY F323

KERRAH A223

KERRAH CAPTAIN C400

D: KERRAH F39

KERRAH A239

2022 AUSTRALASIAN GROUP BREEDPLAN EBVs													INDEXES	
CE Direct	BW	200D	400D	600D	Milk	SS	CARCASE	EMA	RIB	RUMP	IMF	Docility	Maternal	Terminal
+10.1	-1.0	+16	+41	+42	+7	+1.0	+30	+2.5	+0.8	+1.1	+0.7	+11	+\$123	+\$48
39%	67%	65%	67%	63%	40%	71%	55%	51%	55%	54%	46%	54%		

Traits observed: CE BWT 200WT 400WT SS FAT EMA IMF DOC

Non Transferable

COMMENTS: Very quiet bull. Super ease of calving with great finishing ability. Flushed his dam last year.

PURCHASER:

PRICE:

Lot. 72

KERRAH J388 (ET)

DOB 12/09/20



Recommendation	Reg No.	Scrotal
TMH2	1667200388	44cm
Dilution	P/H/Sc	Docility
C	Polled	2

RISSINGTON NEW STANDARD AU158

S: GLENSIDE CRUMPY C4

GLENSIDE AW820

KERRAH WITHOUT DOUBT AW68

D: KERRAH B188

KERRAH CW8188

2022 AUSTRALASIAN GROUP BREEDPLAN EBVs													INDEXES	
CE Direct	BW	200D	400D	600D	Milk	SS	CARCASE	EMA	RIB	RUMP	IMF	Docility	Maternal	Terminal
+5.8	+0.3	+22	+46	+59	+12	+1.1	+34	+4.1	+0.7	+0.7	+0.3	+22	+\$111	+\$52
52%	70%	67%	68%	66%	55%	69%	59%	54%	59%	58%	52%	63%		

Traits observed: BWT 200WT 400WT SS FAT EMA IMF DOC

Non Transferable

COMMENTS: ET calf very good pedigree.

PURCHASER:

PRICE:

2022 AUSTRALASIAN GROUP BREEDPLAN AVERAGE EBVs													INDEXES	
CE Direct	BW	200D	400D	600D	Milk	SS	CARCASE	EMA	RIB	RUMP	IMF	Docility	Maternal	Terminal
+2.6	+0.6	+20	+37	+46	+8	+0.5	+25	+2.4	+0.5	+0.2	+0.3	+9	+\$86	+\$45

Lot. 73

KERRAH J550

DOB 28/09/20



Recommendation	Reg No.	Scrotal
TMH2	1667200550	39cm
Dilution	P/H/Sc	Docility
C	Polled	1.5

KERRAH CAPTAIN C400

S: KERRAH FAT CAT F576

KERRAH B176

WAIKITE ZACKARIAS AZ0176

D: KERRAH E240

KERRAH B241

2022 AUSTRALASIAN GROUP BREEDPLAN EBVs													INDEXES	
CE Direct	BW	200D	400D	600D	Milk	SS	CARCASE	EMA	RIB	RUMP	IMF	Docility	Maternal	Terminal
+9.5	-0.2	+19	+46	+57	+9	+0.3	+36	+2.5	+0.1	+0.0	+0.2	+0	+\$122	+\$52
39%	70%	65%	67%	61%	43%	70%	54%	51%	54%	54%	46%	52%		

Traits observed: CE BWT 200WT 400WT SS FAT EMA IMF DOC

Non Transferable

COMMENTS: Easy calving moderate bull.

PURCHASER:

PRICE:

Lot. 74

KERRAH J328

DOB 20/09/20



Recommendation	Reg No.	Scrotal
TMH2	1667200328	43cm
Dilution	P/H/Sc	Docility
N	Homo Polled	1.5

KERRAH EMPEROR E440

S: KERRAH G746

KERRAH D246

KERRAH COLUMBUS C306

D: KERRAH F28 (ET)

KERRAH Z219

2022 AUSTRALASIAN GROUP BREEDPLAN EBVs													INDEXES	
CE Direct	BW	200D	400D	600D	Milk	SS	CARCASE	EMA	RIB	RUMP	IMF	Docility	Maternal	Terminal
+6.0	+0.8	+22	+50	+59	+10	+1.7	+35	+3.4	+1.3	+1.7	+0.0	+10	+\$122	+\$52
37%	68%	61%	64%	59%	36%	68%	51%	47%	49%	49%	41%	51%		

Traits observed: CE BWT 400WT SS FAT EMA IMF DOC

Non Transferable

COMMENTS: Good all rounder and homo polled.

PURCHASER:

PRICE:

2022 AUSTRALASIAN GROUP BREEDPLAN AVERAGE EBVs													INDEXES	
CE Direct	BW	200D	400D	600D	Milk	SS	CARCASE	EMA	RIB	RUMP	IMF	Docility	Maternal	Terminal
+2.6	+0.6	+20	+37	+46	+8	+0.5	+25	+2.4	+0.5	+0.2	+0.3	+9	+\$86	+\$45

Lot. 75

KERRAH J381

DOB 30/09/20



Recommendation	Reg No.	Scrotal
TM	1667200381	40cm
Dilution	P/H/Sc	Docility
C	Homo Polled	1.5

KERRAH ALLROUNDER A518

S: KERRAH FORTRESS F326

KERRAH A67

OPAWA ZEE BEST Z30

D: KERRAH D181

KERRAH CY181

2022 AUSTRALASIAN GROUP BREEDPLAN EBVs													INDEXES	
CE Direct	BW	200D	400D	600D	Milk	SS	CARCASE	EMA	RIB	RUMP	IMF	Docility	Maternal	Terminal
+4.2	+1.8	+26	+48	+65	+10	+0.9	+36	+3.7	+0.6	+0.6	-0.2	+18	+\$96	+\$51
41%	71%	65%	68%	64%	43%	69%	56%	51%	56%	56%	47%	58%		

Traits observed: CE BWT 400WT SS FAT EMA IMF DOC

Non Transferable

COMMENTS: Another homo polled bull with good pedigree and performance. Very good server.

PURCHASER:

PRICE:

Lot. 76

KERRAH J440

DOB 09/09/20



Recommendation	Reg No.	Scrotal
TMH2	1667200440	40cm
Dilution	P/H/Sc	Docility
N	Homo Polled	1.5

TE RAUMAUKU ANACONDA A13

S: KERRAH FINE TUNED F385

KERRAH C100

GLENSIDE CRUMPY C4

D: KERRAH F240

KERRAH Z240

2022 AUSTRALASIAN GROUP BREEDPLAN EBVs													INDEXES	
CE Direct	BW	200D	400D	600D	Milk	SS	CARCASE	EMA	RIB	RUMP	IMF	Docility	Maternal	Terminal
+8.8	+0.3	+22	+47	+59	+12	+0.9	+34	+3.4	+0.7	+0.9	+0.0	+29	+\$123	+\$55
41%	71%	66%	68%	64%	41%	71%	56%	52%	56%	55%	47%	55%		

Traits observed: CE BWT 200WT 400WT SS FAT EMA IMF DOC

Non Transferable

COMMENTS: Docile out of very good young cow.

PURCHASER:

PRICE:

2022 AUSTRALASIAN GROUP BREEDPLAN AVERAGE EBVs													INDEXES	
CE Direct	BW	200D	400D	600D	Milk	SS	CARCASE	EMA	RIB	RUMP	IMF	Docility	Maternal	Terminal
+2.6	+0.6	+20	+37	+46	+8	+0.5	+25	+2.4	+0.5	+0.2	+0.3	+9	+\$86	+\$45

Lot. 77

KERRAH J313

DOB 29/09/20



Recommendation	Reg No.	Scrotal
TMH2	1667200313	37.5cm
Dilution	P/H/Sc	Docility
C	Polled	1.5

KERRAH DESTINED D608

S: KERRAH GOLDCOAST G722

KERRAH B221

KERRAH WOW FACTOR AW60

D: KERRAH CY103

KERRAH DR5103

2022 AUSTRALASIAN GROUP BREEDPLAN EBVs													INDEXES	
CE Direct	BW	200D	400D	600D	Milk	SS	CARCASE	EMA	RIB	RUMP	IMF	Docility	Maternal	Terminal
+7.3	+0.4	+24	+43	+48	+12	+0.1	+32	+5.0	+1.1	+1.1	+0.1	+10	+\$115	+\$53
41%	72%	65%	67%	62%	45%	70%	54%	50%	53%	52%	42%	52%		

Traits observed: CE BWT 200WT 400WT SS FAT EMA IMF DOC

Non Transferable

COMMENTS: Hard to fault, out of top old cow, very high libido. Great carcass figures.

PURCHASER:

PRICE:

Lot. 78

KERRAH J456

DOB 17/09/20



Recommendation	Reg No.	Scrotal
T	1667200456	40cm
Dilution	P/H/Sc	Docility
N	Polled	2

TE RAUMAUKU DEEP GUTS D25

S: KERRAH GUTSY G716

KERRAH A216

RISSINGTON AFTER SHOCK AA1020

D: KERRAH F56

KERRAH Z56

2022 AUSTRALASIAN GROUP BREEDPLAN EBVs													INDEXES	
CE Direct	BW	200D	400D	600D	Milk	SS	CARCASE	EMA	RIB	RUMP	IMF	Docility	Maternal	Terminal
+3.2	+1.6	+22	+49	+66	+9	+1.5	+36	+3.4	+0.4	+0.4	+0.0	-2	+\$90	+\$50
39%	70%	64%	66%	61%	39%	69%	53%	49%	53%	52%	44%	52%		

Traits observed: GL CE BWT 200WT 400WT SS FAT EMA IMF DOC

Non Transferable

COMMENTS: Attractive, deep bodied, dark coloured bull.

PURCHASER:

PRICE:

2022 AUSTRALASIAN GROUP BREEDPLAN AVERAGE EBVs													INDEXES	
CE Direct	BW	200D	400D	600D	Milk	SS	CARCASE	EMA	RIB	RUMP	IMF	Docility	Maternal	Terminal
+2.6	+0.6	+20	+37	+46	+8	+0.5	+25	+2.4	+0.5	+0.2	+0.3	+9	+\$86	+\$45

Lot. 79

KERRAH J8000

DOB 26/09/20



Recommendation	Reg No.	Scrotal
T	1667200455	41cm
Dilution	P/H/Sc	Docility
N	Polled	2

WAIKITE AC2069

S: KERRAH G891

KERRAH D191

KERRAH ALLROUNDER A518

D: KERRAH F5

KERRAH B106

2022 AUSTRALASIAN GROUP BREEDPLAN EBVs													INDEXES	
CE Direct	BW	200D	400D	600D	Milk	SS	CARCASE	EMA	RIB	RUMP	IMF	Docility	Maternal	Terminal
+5.0	+2.3	+32	+66	+83	+13	+1.4	+49	+3.1	-0.4	-0.8	-0.2	+21	+\$103	+\$64
38%	69%	64%	67%	61%	41%	70%	54%	50%	53%	53%	45%	51%		

Traits observed: CE BWT 200WT 400WT SS FAT EMA IMF DOC

Non Transferable

COMMENTS: Top Growth with frame would suit Angus cows.

PURCHASER:

PRICE:

Lot. 80

KERRAH J490

DOB 10/10/20



Recommendation	Reg No.	Scrotal
TMH2	1667200490	40cm
Dilution	P/H/Sc	Docility
C	Polled	2

TE RAUMAUKU DEEP GUTS D25

S: KERRAH GUTSY G716

KERRAH A216

RISSINGTON AFTER SHOCK AA1020

D: KERRAH F190

KERRAH AY191 (ET)

2022 AUSTRALASIAN GROUP BREEDPLAN EBVs													INDEXES	
CE Direct	BW	200D	400D	600D	Milk	SS	CARCASE	EMA	RIB	RUMP	IMF	Docility	Maternal	Terminal
+2.9	+2.1	+25	+54	+74	+8	+1.4	+40	+3.8	+0.2	+0.1	+0.0	+3	+\$92	+\$54
40%	70%	65%	67%	61%	41%	69%	53%	50%	53%	53%	45%	53%		

Traits observed: CE BWT 200WT 400WT SS FAT EMA IMF DOC

Non Transferable

COMMENTS: Well balanced moderate bull, good pedigree.

PURCHASER:

PRICE:

2022 AUSTRALASIAN GROUP BREEDPLAN AVERAGE EBVs													INDEXES	
CE Direct	BW	200D	400D	600D	Milk	SS	CARCASE	EMA	RIB	RUMP	IMF	Docility	Maternal	Terminal
+2.6	+0.6	+20	+37	+46	+8	+0.5	+25	+2.4	+0.5	+0.2	+0.3	+9	+\$86	+\$45

Lot. 81

KERRAH J470

DOB 13/09/20



Recommendation	Reg No.	Scrotal
TMH2	1667200470	42cm
Dilution	P/H/Sc	Docility
N	Homo Polled	1

GLENSIDE CRUMPY C4

S: KERRAH FIRST CHOICE F360

KERRAH AX9060

RISSINGTON AFTER SHOCK AA1020

D: KERRAH F70

KERRAH AX9070

2022 AUSTRALASIAN GROUP BREEDPLAN EBVs													INDEXES	
CE Direct	BW	200D	400D	600D	Milk	SS	CARCASE	EMA	RIB	RUMP	IMF	Docility	Maternal	Terminal
+6.6	+1.5	+29	+61	+79	+11	+2.1	+46	+3.8	+0.6	+0.8	-0.1	+26	+\$116	+\$63
43%	71%	67%	69%	64%	44%	72%	57%	54%	57%	56%	48%	57%		

Traits observed: CE BWT 200WT 400WT SS FAT EMA IMF DOC

Non Transferable

COMMENTS: Great performance, homozygous polled and non diluter.

PURCHASER:

PRICE:

Lot. 82

KERRAH J350

DOB 30/09/20



Recommendation	Reg No.	Scrotal
TMH2	1667200350	38cm
Dilution	P/H/Sc	Docility
C	Homo Polled	1

RUAVIEW PINETREE AC6

S: GLENSIDE FRONTIER F19

GLENSIDE A207

TNT TOP GUN R244 (IMP USA)

D: KERRAH A50

KERRAH AY191 (ET)

2022 AUSTRALASIAN GROUP BREEDPLAN EBVs													INDEXES	
CE Direct	BW	200D	400D	600D	Milk	SS	CARCASE	EMA	RIB	RUMP	IMF	Docility	Maternal	Terminal
+5.7	+1.1	+29	+52	+64	+8	+0.4	+34	+2.3	+1.2	+1.3	+0.4	+28	+\$96	+\$50
42%	72%	67%	69%	63%	46%	71%	56%	51%	56%	55%	47%	56%		

Traits observed: CE BWT 200WT 400WT SS FAT EMA IMF DOC

Transferable

COMMENTS: Early maturing and super docile.

PURCHASER:

PRICE:

2022 AUSTRALASIAN GROUP BREEDPLAN AVERAGE EBVs													INDEXES	
CE Direct	BW	200D	400D	600D	Milk	SS	CARCASE	EMA	RIB	RUMP	IMF	Docility	Maternal	Terminal
+2.6	+0.6	+20	+37	+46	+8	+0.5	+25	+2.4	+0.5	+0.2	+0.3	+9	+\$86	+\$45

Lot. 83

KERRAH J501

DOB 19/09/20



Recommendation	Reg No.	Scrotal
T	1667200501	41cm
Dilution	P/H/Sc	Docility
N	Polled	1.5

WAIKITE AC2069

S: KERRAH G891

KERRAH D191

KERRAH ASPIRE A300 (ET)

D: KERRAH D201

KERRAH AW1601

2022 AUSTRALASIAN GROUP BREEDPLAN EBVs													INDEXES	
CE Direct	BW	200D	400D	600D	Milk	SS	CARCASE	EMA	RIB	RUMP	IMF	Docility	Maternal	Terminal
+0.1	+3.3	+34	+67	+85	+10	+1.2	+51	+3.9	-0.6	-1.0	-0.2	+17	+95	+60
38%	70%	65%	67%	62%	42%	70%	54%	50%	53%	52%	44%	52%		

Traits observed: CE BWT 200WT 400WT SS FAT EMA IMF DOC

Non Transferable

COMMENTS: Performance plus, suffered injury but has recovered but been checked in weight.

PURCHASER:

PRICE:

Lot. 84

KERRAH J416

DOB 16/10/20



Recommendation	Reg No.	Scrotal
TM	1667200416	41cm
Dilution	P/H/Sc	Docility
N	Horned	1.5

LEAFLAND CAPTAIN C1

S: LEAFLAND AF32

LEAFLAND C74

WAI-ITI HIGH RISER

D: KERRAH Z17

RISSINGTON AM817

2022 AUSTRALASIAN GROUP BREEDPLAN EBVs													INDEXES	
CE Direct	BW	200D	400D	600D	Milk	SS	CARCASE	EMA	RIB	RUMP	IMF	Docility	Maternal	Terminal
-0.9	+3.2	+27	+56	+65	+6	+0.1	+32	+2.6	+0.9	+0.8	+0.4	-4	--	--
42%	69%	59%	59%	57%	46%	51%	48%	41%	48%	47%	39%	49%		

Traits observed: CE BWT 200WT 400WT SS FAT EMA IMF

Transferable

COMMENTS: Only horned bull in the catalogue but what a stunner. Remember over pure Angus cows the calves will be polled.

PURCHASER:

PRICE:

2022 AUSTRALASIAN GROUP BREEDPLAN AVERAGE EBVs													INDEXES	
CE Direct	BW	200D	400D	600D	Milk	SS	CARCASE	EMA	RIB	RUMP	IMF	Docility	Maternal	Terminal
+2.6	+0.6	+20	+37	+46	+8	+0.5	+25	+2.4	+0.5	+0.2	+0.3	+9	+\$86	+\$45

Lot. 85

KERRAH K688

DOB 14/01/21



Recommendation	Reg No.	Scrotal
TMH2	1667210688	38cm
Dilution	P/H/Sc	Docility
N	Polled	1.5

GLENSIDE CRUMPY C4

S: KERRAH FIRST CHOICE F360

KERRAH AX9060

WAIKITE ZACKARIAS AZ0176

D: KERRAH C188

KERRAH CW8188

2022 AUSTRALASIAN GROUP BREEDPLAN EBVs													INDEXES	
CE Direct	BW	200D	400D	600D	Milk	SS	CARCASE	EMA	RIB	RUMP	IMF	Docility	Maternal	Terminal
+10.1	+0.0	+24	+56	+67	+11	+0.4	+46	+4.5	+0.1	-0.2	+0.1	+20	+\$131	+\$66
43%	64%	66%	69%	64%	47%	72%	57%	54%	58%	57%	46%	58%		

Traits observed: 200WT 400WT SS FAT EMA DOC

Non Transferable

COMMENTS: Conclude with 3 top Autumn born yearlings.

PURCHASER:

PRICE:

Lot. 86

KERRAH K672

DOB 14/01/21



Recommendation	Reg No.	Scrotal
T	1667210672	38cm
Dilution	P/H/Sc	Docility
N	Polled	1

KERRAH ALLROUNDER A518

S: KERRAH FOREMAN F349

KERRAH AW8049

OPAWA ZEE BEST Z30

D: KERRAH D111

KERRAH AY111

2022 AUSTRALASIAN GROUP BREEDPLAN EBVs													INDEXES	
CE Direct	BW	200D	400D	600D	Milk	SS	CARCASE	EMA	RIB	RUMP	IMF	Docility	Maternal	Terminal
-3.0	+3.1	+30	+51	+65	+11	+1.5	+34	+3.6	+0.7	+0.9	-0.1	+15	+\$66	+\$42
40%	63%	63%	66%	60%	44%	70%	53%	49%	52%	52%	40%	54%		

Traits observed: GL 200WT 400WT SS FAT EMA DOC

Transferable

COMMENTS: A stunner from birth will develop into a lovely deep bull.
Very docile.

PURCHASER:

PRICE:

2022 AUSTRALASIAN GROUP BREEDPLAN AVERAGE EBVs													INDEXES	
CE Direct	BW	200D	400D	600D	Milk	SS	CARCASE	EMA	RIB	RUMP	IMF	Docility	Maternal	Terminal
+2.6	+0.6	+20	+37	+46	+8	+0.5	+25	+2.4	+0.5	+0.2	+0.3	+9	+\$86	+\$45

Lot. 87

KERRAH K692

DOB 21/01/21



Recommendation	Reg No.	Scrotal
TMH2H1	1667210692	34cm
Dilution	P/H/Sc	Docility
C	Homo Polled	2

GLENSIDE CRUMPY C4

S: KERRAH FIRST CHOICE F360

KERRAH AX9060

KERRAH DAPPER D662

D: KERRAH F92

KERRAH Z202

2022 AUSTRALASIAN GROUP BREEDPLAN EBVs													INDEXES	
CE Direct	BW	200D	400D	600D	Milk	SS	CARCASE	EMA	RIB	RUMP	IMF	Docility	Maternal	Terminal
+10.0	+0.2	+22	+48	+58	+13	+0.6	+36	+3.6	+0.0	-0.1	+0.0	+17	+\$119	+\$59
41%	61%	65%	68%	63%	43%	72%	56%	53%	56%	56%	45%	57%		

Traits observed: 200WT 400WT SS FAT EMA DOC

Transferable

COMMENTS: Homo polled super easy calving.

PURCHASER:

PRICE:



Certain consignments were again specifically targeted and achieved some exceptional prices. None more so than a line-up of Kerrah bred Simmental (some pictured below) which were subject to intense bidding wars before selling for more than anything else at similar weights. The pinnacle of these were the 265-280kg lines at \$4.40-\$4.45/kg, \$1170-\$1225.

Other straight-bred exotics were subject to good interest too, usually at or just under \$4/kg at all weights. But the bulk of the other exotics were Charolais-cross where the usual range was \$3.60-\$3.75/kg from 205kg to 330kg.





In loving memory
of Kevin



EAST COAST | WAIROA
FARMVETS

**PROUDLY
LOCALLY OWNED
AND OPERATED**

 **06 868 8616**

349 Childers Road, Gisborne 4010

 **06 838 3832**

77-79 Queen Street, Wairoa 4108

NOTES



PURCHASERS INSTRUCTION SLIP

To be filled in and handed to the Auctioneer before leaving the sale

Name Buyer Number

Postal Address

Physical address for delivery (please be specific)

Telephone Fax

Email NAIT Number

PURCHASES:

Lot Number Price Lot Number Price

Lot Number Price Lot Number Price

Lot Number Price Lot Number Price

☐ Please tick this box if you consent to your information being shared between
insurer name
..... and/or the relevant livestock agency, for the purpose of offering you insurance.
vendor or organising body

Lot Number Price Lot Number Price

Payment Date: June July

Insurance - Transit YES NO Term:

Livestock Firm to be debited

Address of company if required

Transport firm used most often

Secondary transport firm

Signature Date

Purchaser or agent

NO VERBAL INSTRUCTIONS WILL BE ACCEPTED

ANY COMMENTS - WE WELCOME FEEDBACK



Private Treaty Bulls available for viewing and sale after the auction



AonAgri are New Zealand's leading rural insurance broker, and proudly support farming communities around the country.

Having worked with farmers, buyers and industry members across New Zealand, for a number of years, our dedicated teams understand the value and importance of making sure your stock and farm assets are properly covered - right from sale. From quote to claims management, we're with you every step of the way.

Talk to your local AonAgri broker today | 0800 266 276

Visit | aon.co.nz





1350 Hereheretau Rd,
RD 6, WAIROA 4196

www.kerrahsimmentals.co.nz

CONTACT:

Jon Knauf 06 838 6793
E: jsknauf@gisborne.net.nz

Phil Transom 0274 420 060
PGG Wrightson

Ross Mitchell 0274 048 965
Fergus Rural